

WELCOME TO
PRENTIS ROAD, SW16

An impressive six bedroom detached home with off-street parking, occupying a corner plot on one of Streatham's most desirable roads off of Tooting Bec Common.

The ground floor occupies a front reception room with study that lies parallel. After passing the WC you will enter a truly impressive and bespoke open-plan kitchen living area. This room has original sash windows as well as bi-fold doors that lead out into the beautiful private garden.

Four double bedrooms are located on the first floor, all with plenty of room for storage as well as a separate family bathroom. The top floor has a further two large double bedrooms with separate bathrooms.

Prentis Road is an attractive tree-lined road located close to Tooting Bec Common and numerous shops, bars and restaurants on Streatham High Road. Commuters have regular links to the City including the Thameslink at Streatham, Streatham Hill station and numerous bus routes via Balham and Brixton.



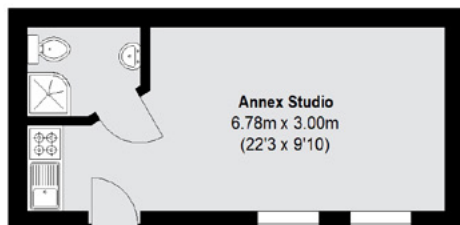


HOME FEATURES

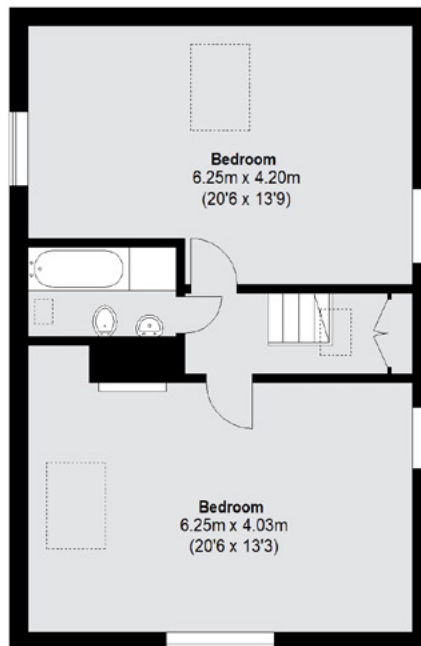
- Detached Corner Plot
- Self-Contained Annex
- Six Bedrooms
- Close To Tooting Bec Common
- Modernised Throughout
- Off-Street Parking



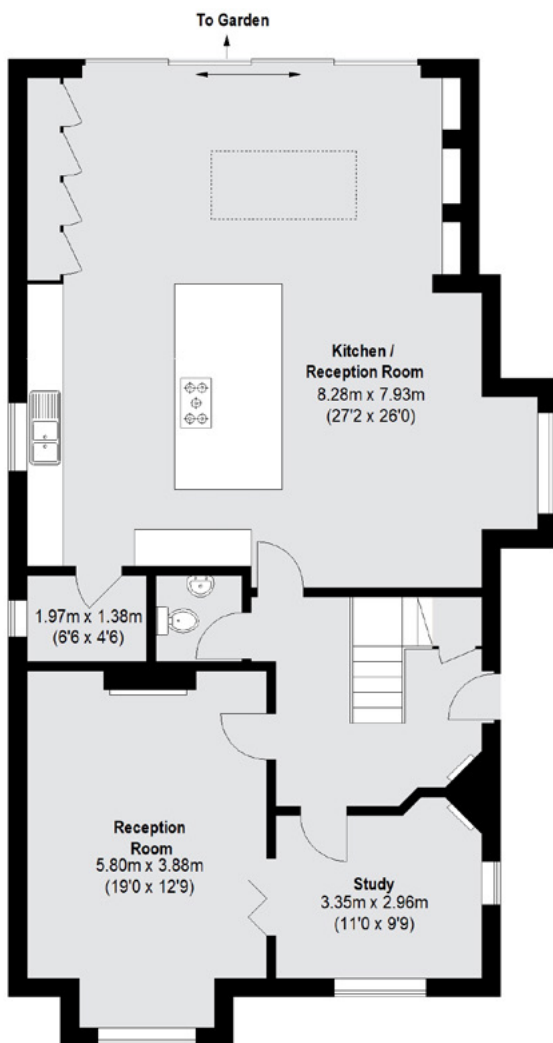
PRENTIS ROAD STREATHAM, SW16



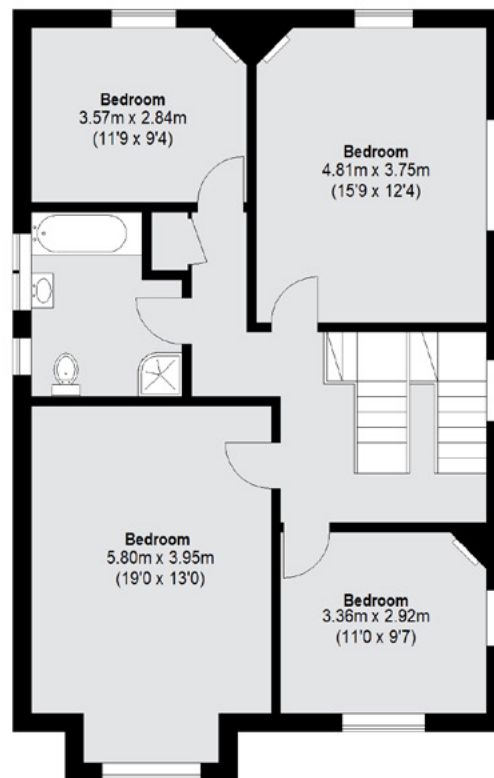
(Not Shown In Actual Location / Orientation)



Second Floor



Ground Floor



First Floor

TOTAL APPROX. FLOOR AREA 2777 SQ. FT. (257.98 SQ. M)
ANNEX STUDIO: 221 SQ. FT. (20.57 SQ. M)

Energy Rating: D. We aim to make our particulars both accurate and reliable. However they are not guaranteed; nor do they form part of an offer or contract. If you require clarification on any points then please contact us, especially if you're traveling some distance to view. Please note that appliances and heating systems have not been tested and therefore no warranties can be given as to their good working order.

JACKSONS STREATHAM
020 8487 3179