



## SUNNYHILL ROAD, SW16

£975,000

- High Spec Victorian Home
- Semi-Detached
- Large South Facing Garden
- Three Bedrooms
- Potential to Extend
- Popular Central Location

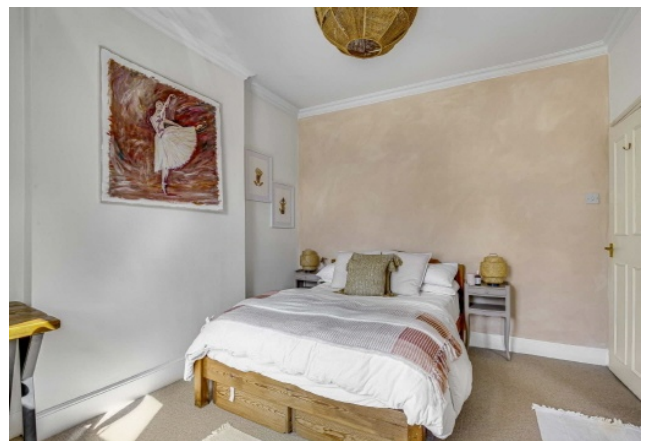




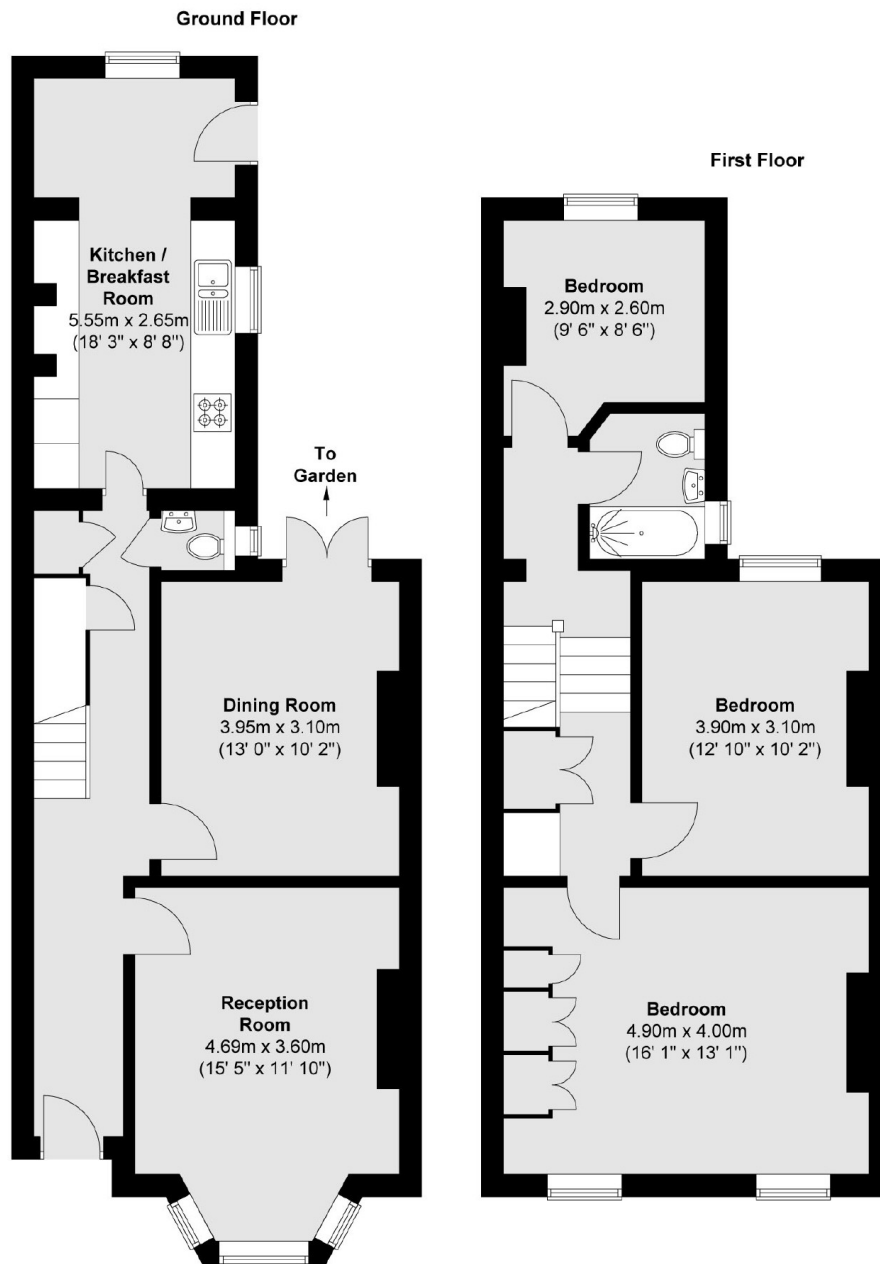
## ABOUT THE HOME

A charming and fully refurbished Semi-Detached Victorian house with a large south facing garden on a popular road close to Streatham High Road and the Rookery Gardens.

Sunnyhill Road is a popular road located nearby both Streatham and Streatham Hill Station. The close proximity to the high road means it is well connected along many bus routes and close to many amenities such as cafes, bars, and shops.







Total area (approx.) : 110.7 sq. m (1191 sq. ft)

### JACKSONS STREATHAM

1-3 De Montfort Parade,  
Streatham High Road,  
Sales: 020 8487 3179  
Lettings: 020 8487 3180

Energy Rating: E We aim to make our particulars both accurate and reliable. However they are not guaranteed; nor do they form part of an offer or contract. If you require clarification on any points then please contact us, especially if you're traveling some distance to view. Please note that appliances and heating systems have not been tested and therefore no warranties can be given as to their good working order.