



Lewin Road, SW16

£1,800 PCM

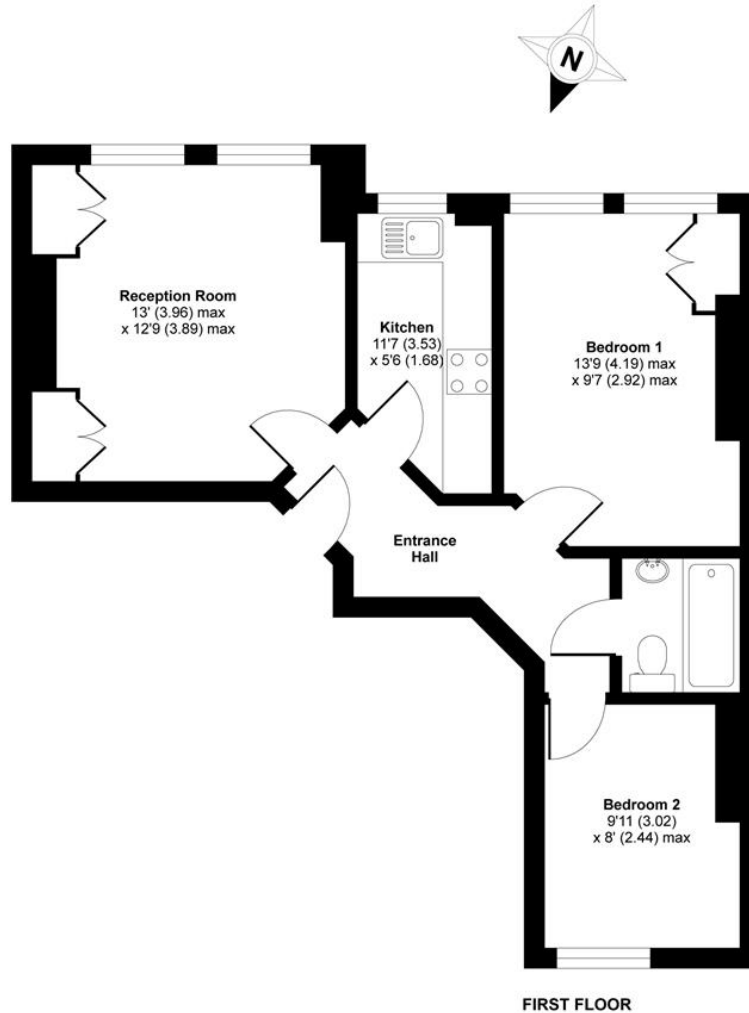
A bright two double bedroom first floor conversion flat located close to both Streatham and Streatham Common train stations.

- Two Double Bedrooms
- Excellent Condition
- Modern Fitted Kitchen
- Modern Fitted Bathroom
- Close to Station
- Furnished

For further information on the costs associated with renting a property, please pop into our office or visit our website.



Lewin Road is a quiet residential road, ideally located within close proximity to an array of local bus routes and amenities along Streatham High Road.



APPROX. GROSS INTERNAL FLOOR AREA 543 SQ FT 50.4 SQ METRES

Lewin Road, Streatham, London, SW16

Copyright nichecom.co.uk 2012 Produced for Jacksons the Independent Estate Agents REF : 329119

Jacksons Streatham
1-3 De Montfort Parade
Streatham High Road
Streatham
London
SW16 1BU

Energy Rating: D We aim to make our particulars both accurate and reliable. However they are not guaranteed; nor do they form part of an offer or contract. If you require clarification on any points then please contact us, especially if you're traveling some distance to view. Please note that appliances and heating systems have not been tested and therefore no warranties can be given as to their good working order.