



GRACEFIELD GARDENS, SW16

£675,000

- Purpose built maisonette
- Two double bedrooms
- Large South facing garden
- High specification
- Fully extended
- Energy rating: D





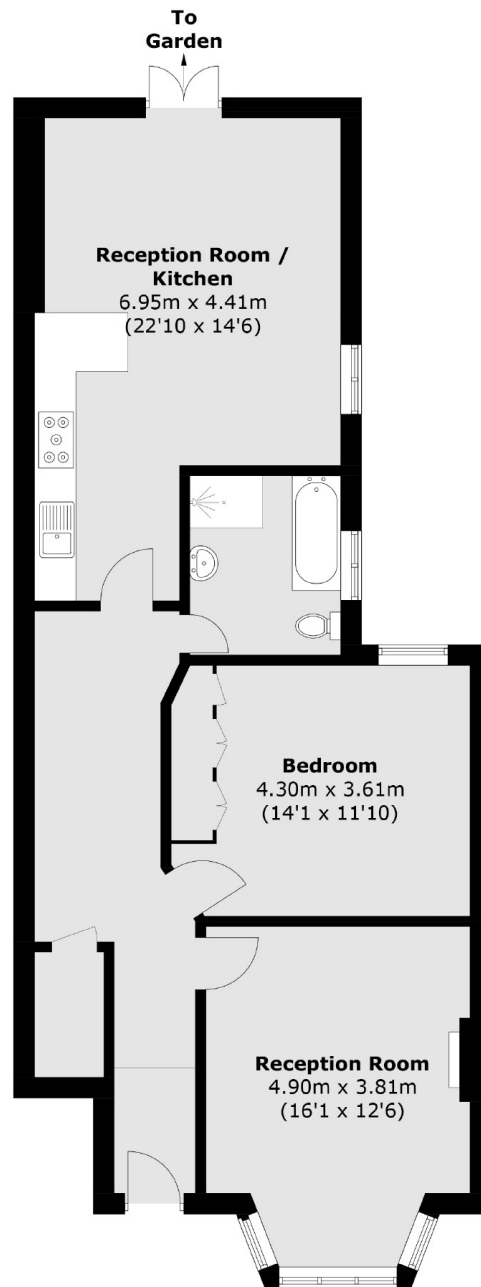
ABOUT THE HOME

A high spec, purpose built maisonette with a large south facing garden which has been renovated to a high standard by the current owners and is located just round the corner from Tooting Bec Common, Streatham Hill and Streatham Main Station.

Gracefield Gardens is perfectly placed for the plethora of amenities of Streatham High Road and is within easy reach of Streatham Hill mainline station providing rail links to London Victoria via Clapham Junction. The shops, bars and restaurants of the high road and the wide expanses of Tooting Common are all within close proximity.







Total area (approx.): 83.0 sq. m (893.4 sq. ft)

JACKSONS STREATHAM

1-3 De Montfort Parade,
Streatham High Road,
Sales: 020 8487 3179
Lettings: 020 8487 3180

Energy Rating: D We aim to make our particulars both accurate and reliable. However they are not guaranteed; nor do they form part of an offer or contract. If you require clarification on any points then please contact us, especially if you're traveling some distance to view. Please note that appliances and heating systems have not been tested and therefore no warranties can be given as to their good working order.