



MOUNT EPHRAIM LANE, SW16

£1,950,000

- Five bedroom house
- Large South facing garden
- Extension potential
- Quiet residential road
- Opposite Tooting Bec Common
- Energy rating: D





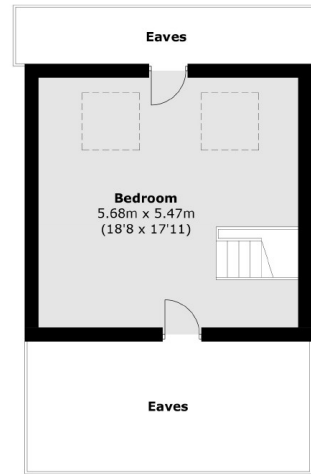
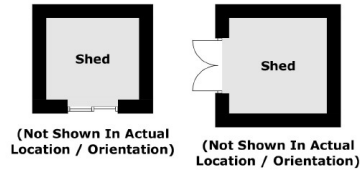
ABOUT THE HOME

A large Semi-Detached five bedroom family home, situated on one of the most premium roads in Streatham. Off-Street parking and a substantial south facing garden make this an extremely appealing home.

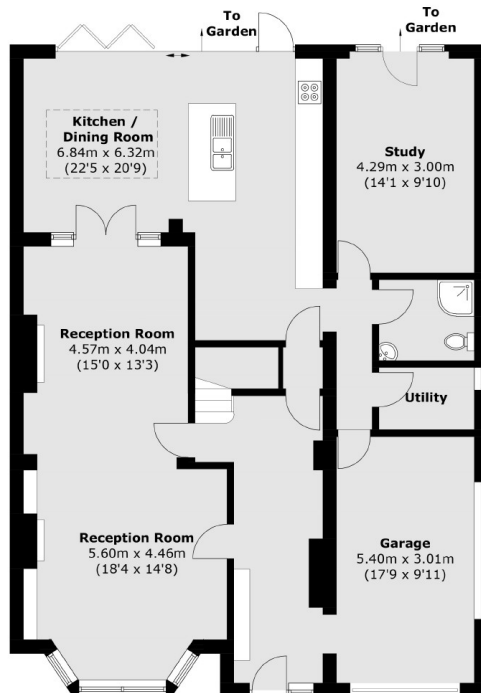
Mount Ephraim Lane is located just off Bedford Hill bordering Balham. Streatham Hill mainline, Balham mainline and Balham underground stations are all close by as is Tooting Bec Common. Residents have access to a range of amenities, including excellent schools, the recreational facilities of the Common and independent coffee shops, pubs, bars and restaurants in Balham and Streatham Hill.



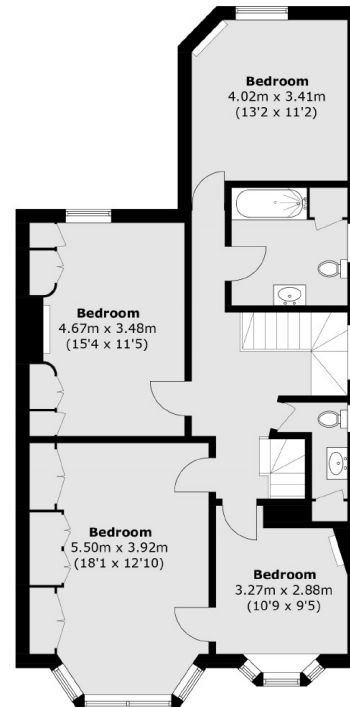




Second Floor



Ground Floor



First Floor

Total area (approx.): 249.0 sq. m (2,680.1 sq. ft)
(Excluding Eaves)
Sheds: 8.4 sq. m (90.4 sq. ft)

JACKSONS STREATHAM

1-3 De Montfort Parade,
Streatham High Road,
Sales: 020 8487 3179
Lettings: 020 8487 3180

Energy Rating: D We aim to make our particulars both accurate and reliable. However they are not guaranteed; nor do they form part of an offer or contract. If you require clarification on any points then please contact us, especially if you're traveling some distance to view. Please note that appliances and heating systems have not been tested and therefore no warranties can be given as to their good working order.