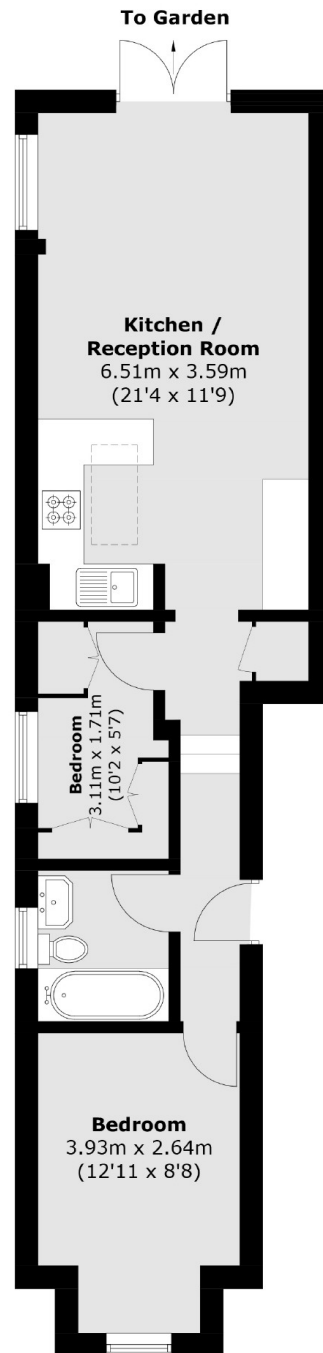


EARDLEY ROAD, SW16

£450,000

- Victorian conversion
- Recently renovated
- Large garden
- Off-street parking
- Good condition
- Energy rating: C





Total area (approx.): 48.3 sq. m (519.9 sq. ft)

JACKSONS STREATHAM

1-3 De Montfort Parade,
Streatham High Road,
Sales: 020 8487 3179
Lettings: 020 8487 3180

Energy Rating: C We aim to make our particulars both accurate and reliable. However they are not guaranteed; nor do they form part of an offer or contract. If you require clarification on any points then please contact us, especially if you're traveling some distance to view. Please note that appliances and heating systems have not been tested and therefore no warranties can be given as to their good working order.