



WESTWELL ROAD, SW16

£625,000

- Two double bedrooms
- Superb condition
- Large private garden
- Seperate studio
- Off-street parking
- On quiet residential road





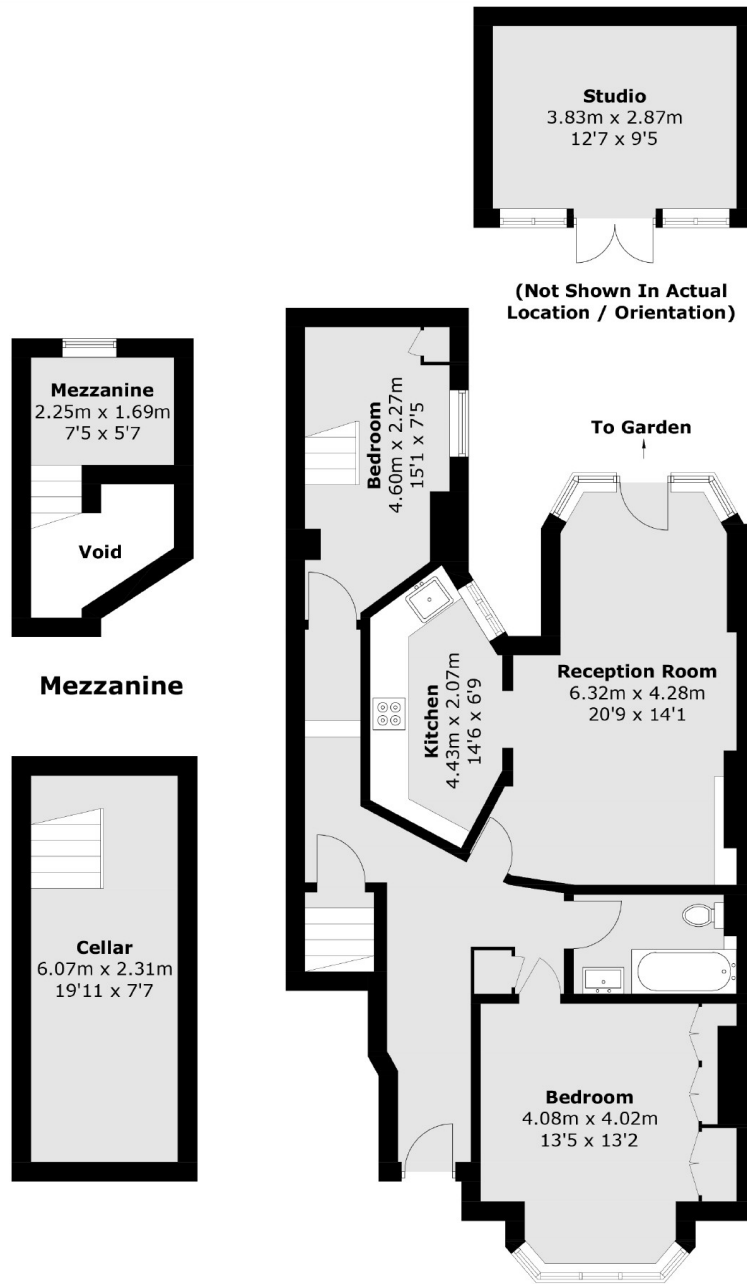
ABOUT THE HOME

A beautifully presented two double bedroom maisonette with off-street parking, a large private garden and separate studio.

Westwell Road is a quiet residential road located moments from the wide open spaces of Streatham common, as well as local amenities and popular bars and restaurants. Streatham common station (Southern rail) and local bus routes are only a short walk away, both allowing for frequent access into and out of the City







Cellar

Ground Floor

Total area (approx.): 91.6 sq. m (985.9 sq. ft)
 (Excluding Void & Including Cellar / Mezzanine)
 Studio: 11.2 sq. m (120.5 sq. ft)

JACKSONS STREATHAM

1-3 De Montfort Parade,
 Streatham High Road,
 Sales: 020 8487 3179
 Lettings: 020 8487 3180

Energy Rating: Appraisal We aim to make our particulars both accurate and reliable. However they are not guaranteed; nor do they form part of an offer or contract. If you require clarification on any points then please contact us, especially if you're traveling some distance to view. Please note that appliances and heating systems have not been tested and therefore no warranties can be given as to their good working order.