



FAIRMILE AVENUE, SW16

£1,150,000

- Period Family Home
- Five Bedrooms
- Two Bathrooms
- Potential To Extend
- Off-Street Parking
- Private Garden space





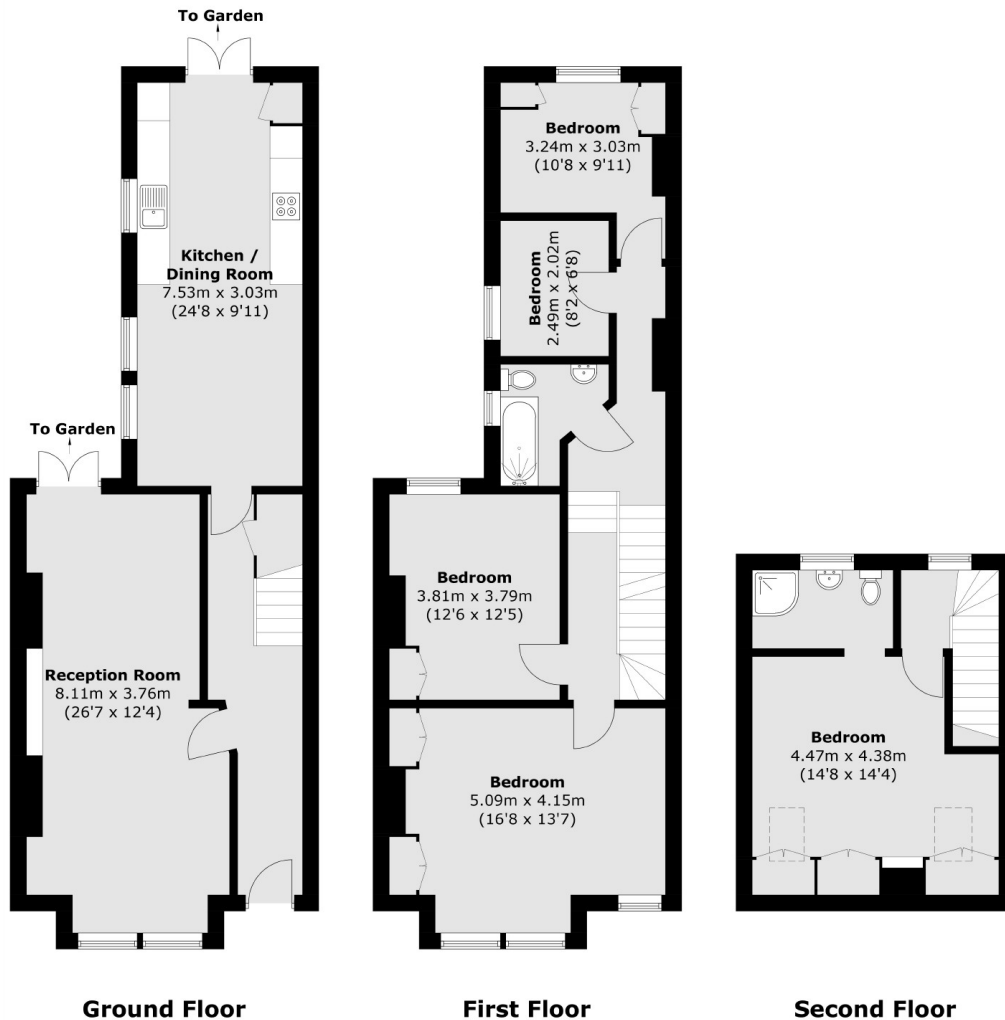
ABOUT THE HOME

A well presented Victorian family home on a residential road nearby Streatham Station and Tooting Bec Common. The property benefits from five Bedrooms, off-street parking and a good sized garden.

Fairmile Avenue is a quiet residential road located within very close proximity of Streatham railway station, which has the Thameslink service. The property is also in close proximity to Streatham High Road which has many amenities including cafés, pubs, both high street and independent retailers, and supermarkets. Bus routes up and down the high road provide easy access to Tooting and Balham.







Total area (approx.): 153.2 sq. m (1,649.0 sq. ft)

JACKSONS STREATHAM

1-3 De Montfort Parade,
 Streatham High Road,
 Sales: 020 8487 3179
 Lettings: 020 8487 3180

Energy Rating: D We aim to make our particulars both accurate and reliable. However they are not guaranteed; nor do they form part of an offer or contract. If you require clarification on any points then please contact us, especially if you're traveling some distance to view. Please note that appliances and heating systems have not been tested and therefore no warranties can be given as to their good working order.