



OAKDALE ROAD, SW16

£325,000

- Victorian conversion
- One double bedroom
- Excellent condition
- Central location
- Off-street parking
- Energy rating: D





ABOUT THE HOME

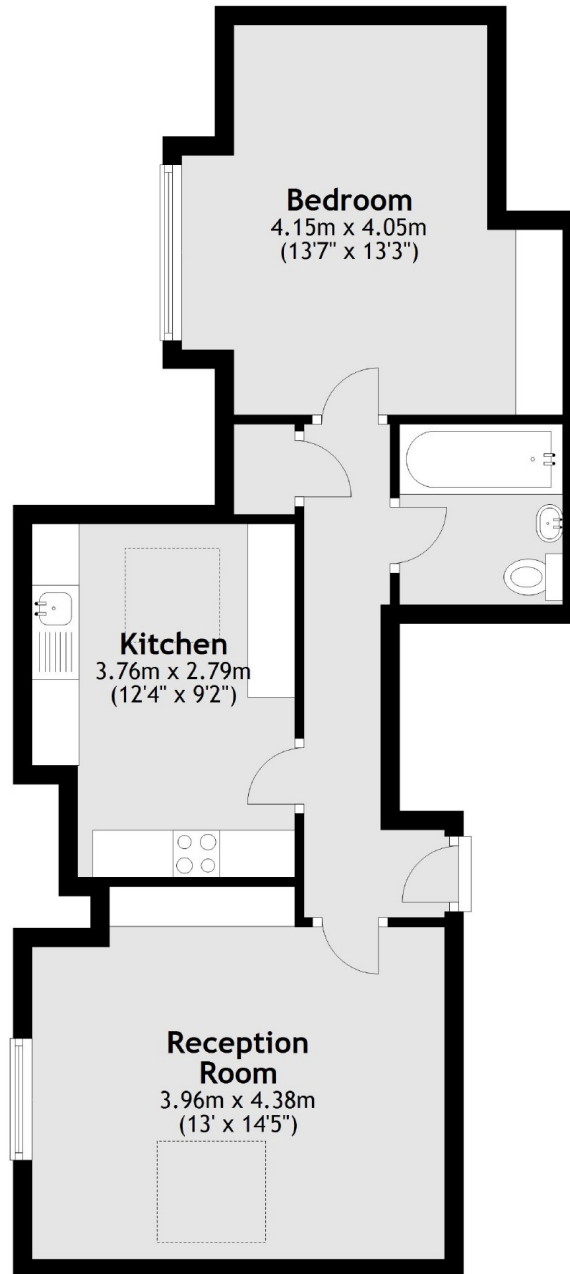
A spacious top floor one bedroom conversion flat presented in excellent condition throughout.

Oakdale road is a quiet residential street, a short walking distance from Streatham Common. The high road along with it's bars, restaurants, cafes and supermarkets are all easily accessible as is Streatham Station with frequent trains to London Bridge or Streatham Hill station which is just up the high road . Oakdale Road also benefits from direct buses to Balham and a short bus ride to Brixton tube station.





Second Floor



Total area: approx. 50.5 sq. metres (543.8 sq. feet)

JACKSONS STREATHAM

1-3 De Montfort Parade,
Streatham High Road,
Sales: 020 8487 3179
Lettings: 020 8487 3180

Energy Rating: D We aim to make our particulars both accurate and reliable. However they are not guaranteed; nor do they form part of an offer or contract. If you require clarification on any points then please contact us, especially if you're traveling some distance to view. Please note that appliances and heating systems have not been tested and therefore no warranties can be given as to their good working order.