



Amesbury Avenue, SW2

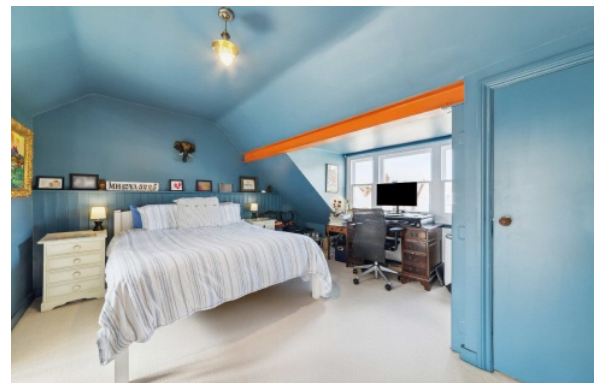
£1,150,000

A high spec family home with roof terrace, south facing garden and located on a popular road in central Streatham Hill. The house has been renovated to a high standard by the sellers and still retains all the original period features.

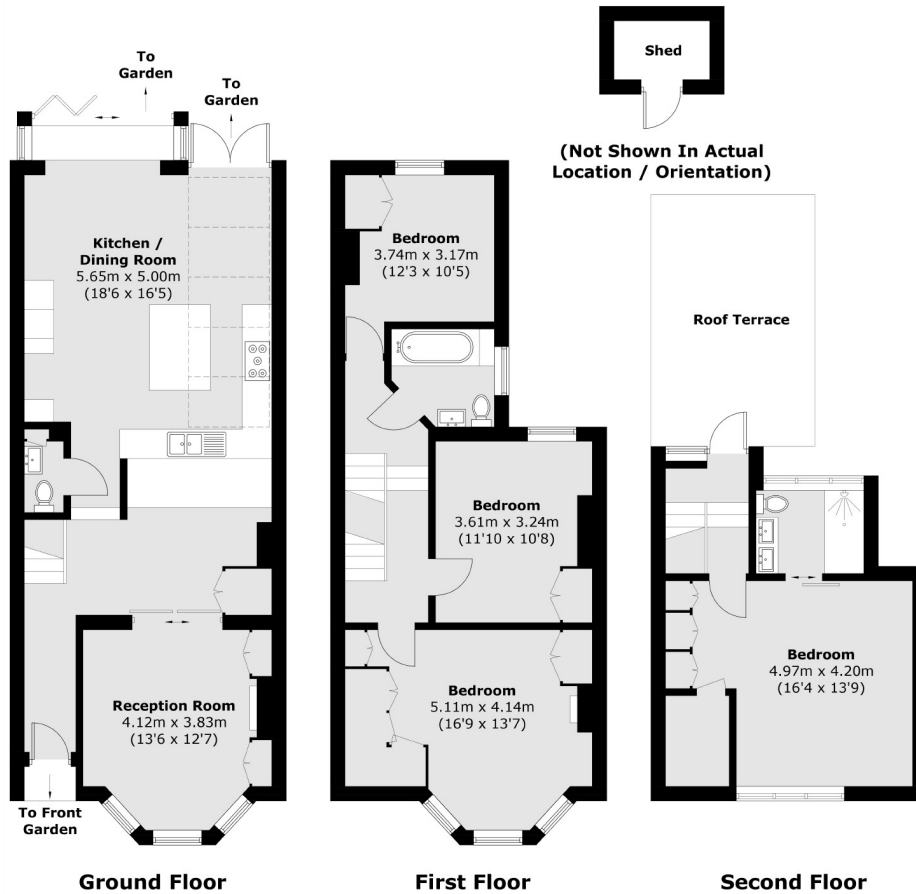
- Fully Extended Victorian House
- Four Double Bedrooms
- South Facing Garden & Roof Terrace
- Extensive Built-In Storage
- EV Charging Point
- Underfloor Heating



Amesbury Avenue is within close proximity of numerous local bars, coffee shops, restaurants and both independent and high street retailers. Transport links are very flexible with railway services to Victoria via Clapham Junction at Streatham Hill station and the Victoria Line at Brixton easily accessible with a short bus journey.







Total area (approx.): 151.8 sq. m (1,634.3 sq. ft)
(Excluding Shed)

Roof Terrace: 17.2 sq. m (185.1 sq. ft)

Jacksons Streatham
1-3 De Montfort Parade
Streatham High Road
Streatham
London
SW16 1BU

Energy Rating: D We aim to make our particulars both accurate and reliable. However they are not guaranteed; nor do they form part of an offer or contract. If you require clarification on any points then please contact us, especially if you're traveling some distance to view. Please note that appliances and heating systems have not been tested and therefore no warranties can be given as to their good working order.