



BUCKLEIGH ROAD, SW16

£450,000

- Two double bedrooms
- Large south facing garden
- Nearby Streatham common
- Permission to extend
- Great condition
- Energy rating: D





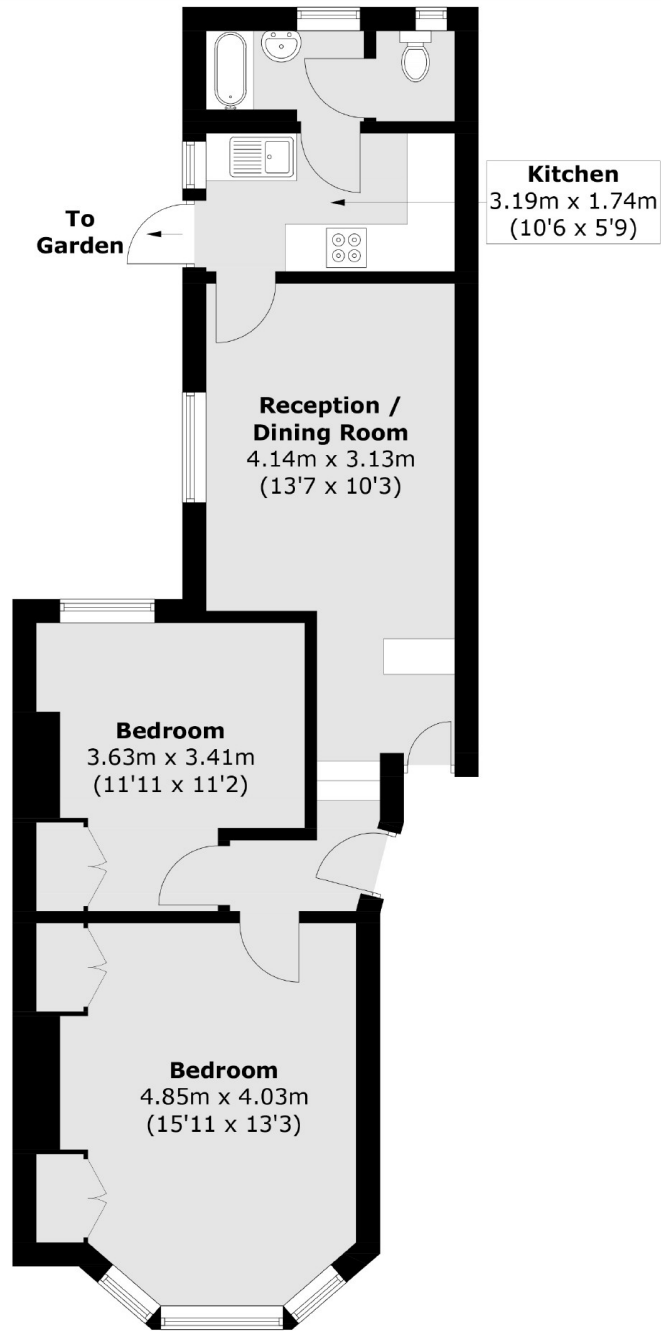
## ABOUT THE HOME

A two bedroom ground floor garden flat located on a great road nearby Streatham Common. The property is in excellent condition and the current owners have planning permission for a rear wrap around extension.

Located moments away from Streatham Common and Streatham station, this property is ideally positioned for commuters, offering quick services to the City via Southern Rail & City Thameslink lines. There are several independent pubs, cafés, restaurants and a number of outstanding schools within striking distance, as well as gyms, a leisure centre and supermarkets, including an M&S food hall.







Total area (approx.): 61.5 sq. m (662 sq. ft)

### JACKSONS STREATHAM

1-3 De Montfort Parade,  
Streatham High Road,  
Sales: 020 8487 3179  
Lettings: 020 8487 3180

Energy Rating: D We aim to make our particulars both accurate and reliable. However they are not guaranteed; nor do they form part of an offer or contract. If you require clarification on any points then please contact us, especially if you're traveling some distance to view. Please note that appliances and heating systems have not been tested and therefore no warranties can be given as to their good working order.