



## Conyers Road, SW16

£325,000

A first floor split level Victorian Converted flat. This property is in great condition and is situated on a popular road nearby Streatham Station & Tooting Bec Common.

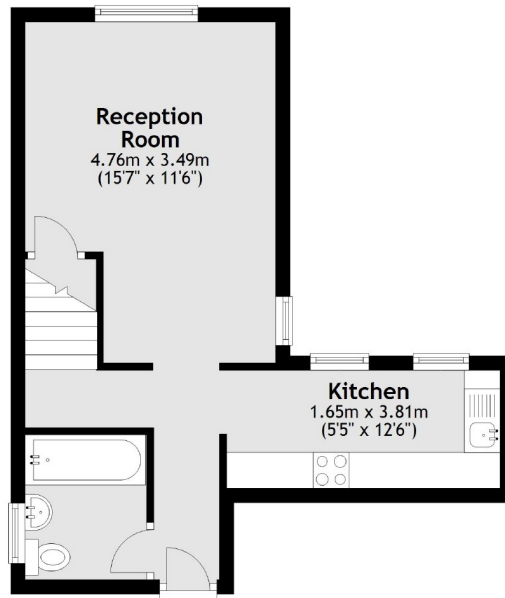
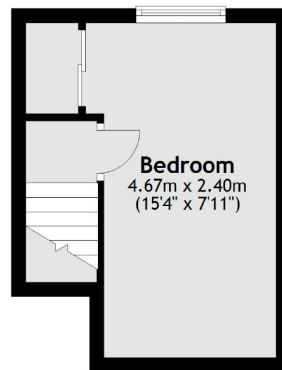
- Great Condition
- Split Level
- Victorian Conversion
- Nearby Streatham Station
- Over 500 Sq Ft
- Central Location



Conyers Road is a just a short walk from Streatham station and town centre with trains providing Southern and Thames link services with direct access into London.





**First Floor****Second Floor**

Total area: approx. 46.5 sq. metres (500.4 sq. feet)

Jacksons Streatham  
1-3 De Montfort Parade  
Streatham High Road  
Streatham  
London  
SW16 1BU

Energy Rating: D We aim to make our particulars both accurate and reliable. However they are not guaranteed; nor do they form part of an offer or contract. If you require clarification on any points then please contact us, especially if you're traveling some distance to view. Please note that appliances and heating systems have not been tested and therefore no warranties can be given as to their good working order.