



HAMBRO ROAD, SW16

£795,000

- Victorian terraced house
- Three bedrooms
- Excellent condition
- Extension potential
- Ferrers triangle
- Energy rating: C





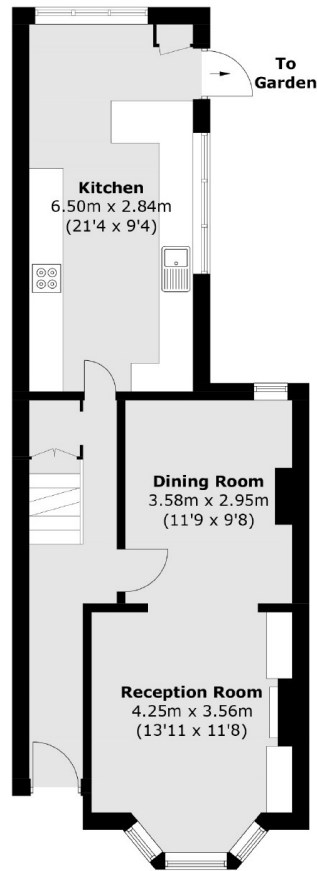
ABOUT THE HOME

A mid-terraced Victorian house comprising of three spacious bedrooms, located within the desirable Ferrers triangle. The property is in great condition with potential to further extend.

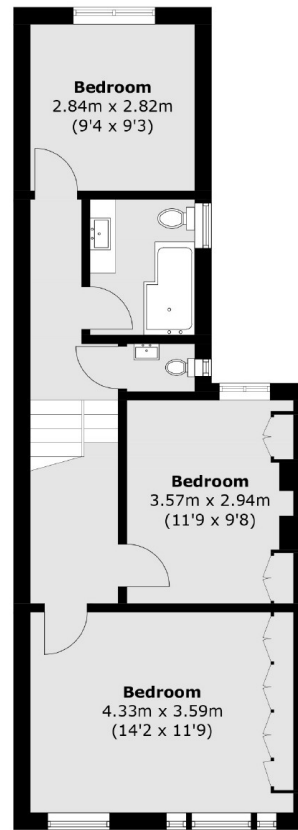
Hambro Road is situated in close proximity to a wealth of amenities in the area including numerous of independent pubs, coffee shops, and restaurants, several large supermarkets, leisure centre and the green spaces of Streatham Common. Residents have easy access to a number of transport links including the Thameslink via Streatham Mainline Station and Streatham Common offering quick links in to Victoria and London Bridge and a number of bus routes to Brixton (Victoria Line) and the City.



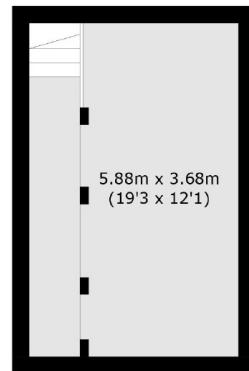




Ground Floor



First Floor



Cellar

Total area (approx.): 129.0 sq. m (1,388.4 sq. ft)

JACKSONS STREATHAM

1-3 De Montfort Parade,
Streatham High Road,
Sales: 020 8487 3179
Lettings: 020 8487 3180

Energy Rating: C We aim to make our particulars both accurate and reliable. However they are not guaranteed; nor do they form part of an offer or contract. If you require clarification on any points then please contact us, especially if you're traveling some distance to view. Please note that appliances and heating systems have not been tested and therefore no warranties can be given as to their good working order.