



Penistone Road, SW16

£3,000 PCM

A well presented two bedroom, two bathroom conversion flat, set moments from the open spaces of Streatham Common.

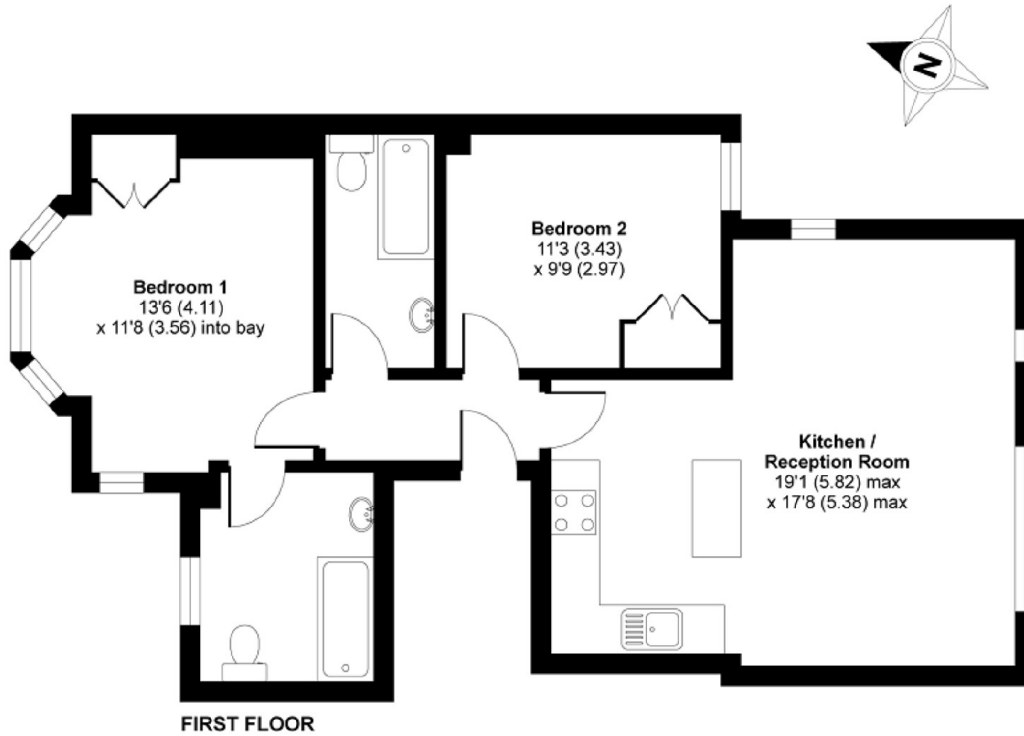
- Open Plan
- Two Bathrooms
- Two Double Bedrooms
- Fitted Wardrobes

For further information on the costs associated with renting a property, please pop into our office or visit our website.



Penistone Road is ideally positioned for both Streatham Common and Streatham train stations, numerous supermarkets, cafés and pubs, whilst Streatham Common itself is just moments away.





APPROX. GROSS INTERNAL FLOOR AREA 705 SQ FT 65.5 SQ METRES

Penistone Road, Streatham, London, SW16

Copyright nichecom.co.uk 2014 Produced for Jacksons the Independent Estate Agents REF : 603562

Jacksons Streatham
1-3 De Montfort Parade
Streatham High Road
Streatham
London
SW16 1BU

Energy Rating: D We aim to make our particulars both accurate and reliable. However they are not guaranteed; nor do they form part of an offer or contract. If you require clarification on any points then please contact us, especially if you're traveling some distance to view. Please note that appliances and heating systems have not been tested and therefore no warranties can be given as to their good working order.