



NORBURY CLOSE, SW16

£595,000

- Semi-detached house
- Three bedrooms
- Side access garage
- Extension potential
- Off-street parking
- Energy rating: D





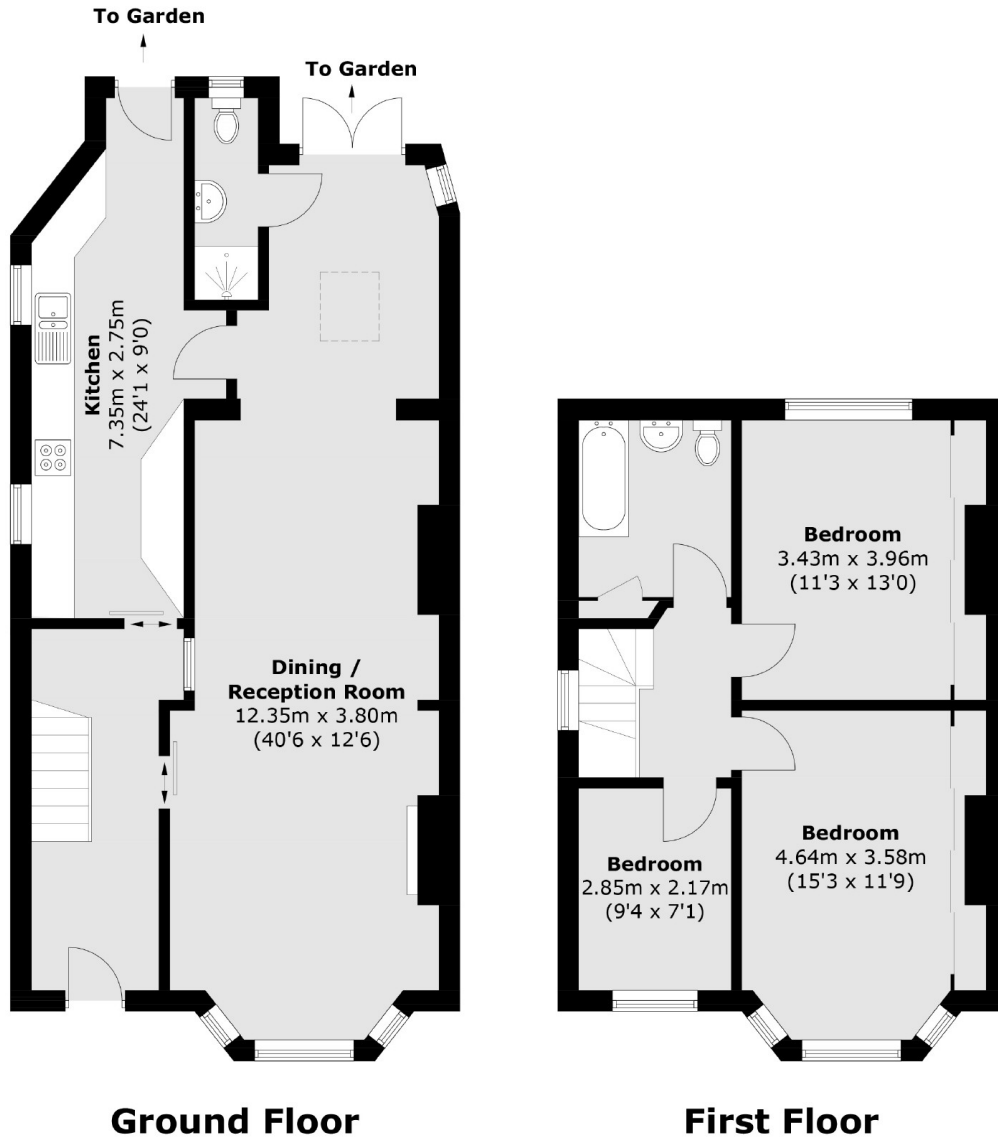
ABOUT THE HOME

A well proportioned semi-detached family home with development potential on a highly desirable cul-de sac off of Green Lane.

Norbury Close is a quiet residential street located nearby the green spaced of Norbury Park and Streatham Common. Streatham High Road is in close proximity, which is home to many amenities. Convenient transport links into the city are found at Norbury and Streatham Common Stations, along with the many bus routes found on Streatham High Road. Exceptional local amenities include shopping facilities, reputable schools, bus routes, restaurants, parkland, gyms and much more.







Total area (approx.): 118.4 sq. m (1,274.4 sq. ft)

JACKSONS STREATHAM

1-3 De Montfort Parade,
 Streatham High Road,
 Sales: 020 8487 3179
 Lettings: 020 8487 3180

Energy Rating: D We aim to make our particulars both accurate and reliable. However they are not guaranteed; nor do they form part of an offer or contract. If you require clarification on any points then please contact us, especially if you're traveling some distance to view. Please note that appliances and heating systems have not been tested and therefore no warranties can be given as to their good working order.