



Gracefield Gardens, SW16

£495,000

A first floor purpose built maisonette on a sought after road in Streatham Hill. The property is in excellent condition and benefits further from two double bedrooms and open plan kitchen/living.

- Purpose Built Maisonette
- Central Location
- Two Bedrooms
- Great Condition
- Large Loft Space
- Close To Amenities & Transport

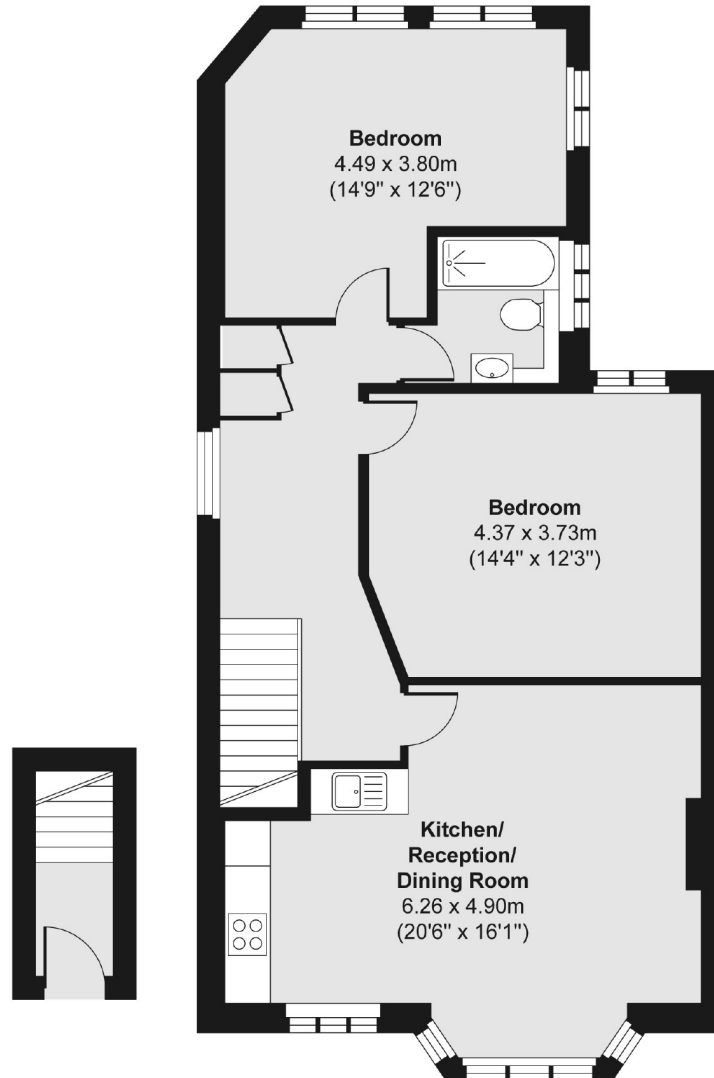


Gracefield Gardens is situated in a sought after location placed for the plethora of amenities of Streatham High Road. It is within easy reach of Streatham Hill mainline station which provides rail links to London Victoria via Clapham Junction. The shops, bars and restaurants of the high road and the wide expanses of Tooting Common are all within close proximity.



Ground Floor

First Floor



Total area (approx.) 75.81 sq. m (816 sq. ft)

Jacksons Streatham
1-3 De Montfort Parade
Streatham High Road
Streatham
London
SW16 1BU

Energy Rating: C We aim to make our particulars both accurate and reliable. However they are not guaranteed; nor do they form part of an offer or contract. If you require clarification on any points then please contact us, especially if you're traveling some distance to view. Please note that appliances and heating systems have not been tested and therefore no warranties can be given as to their good working order.