



Valley Road, SW16

£625,000

Nestled moments from the vibrant Streatham Common, this exquisite three-bedroom split-level conversion offers a captivating blend of Victorian charm and modern elegance. Step into a breathtaking open-plan living and dining

- Split Level Conversion
- Three Double Bedrooms
- Separate Study
- Open Plan Living Space
- Immaculate Condition
- Common Side Location

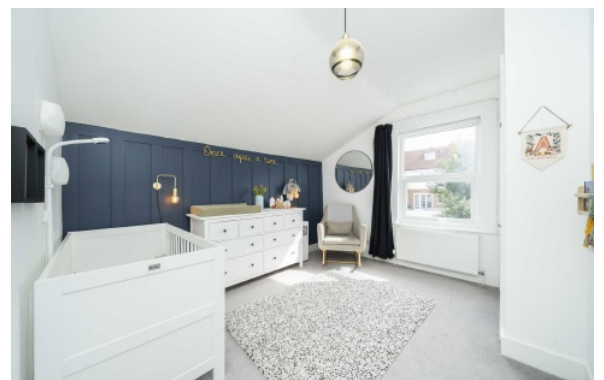


The property boasts three generously sized bedrooms, each offering a unique ambiance and custom built wardrobes including the Master Bedroom with a walk-in wardrobe. The Study can also be used a nursery or childrens room and offers spectacular views over south west London.

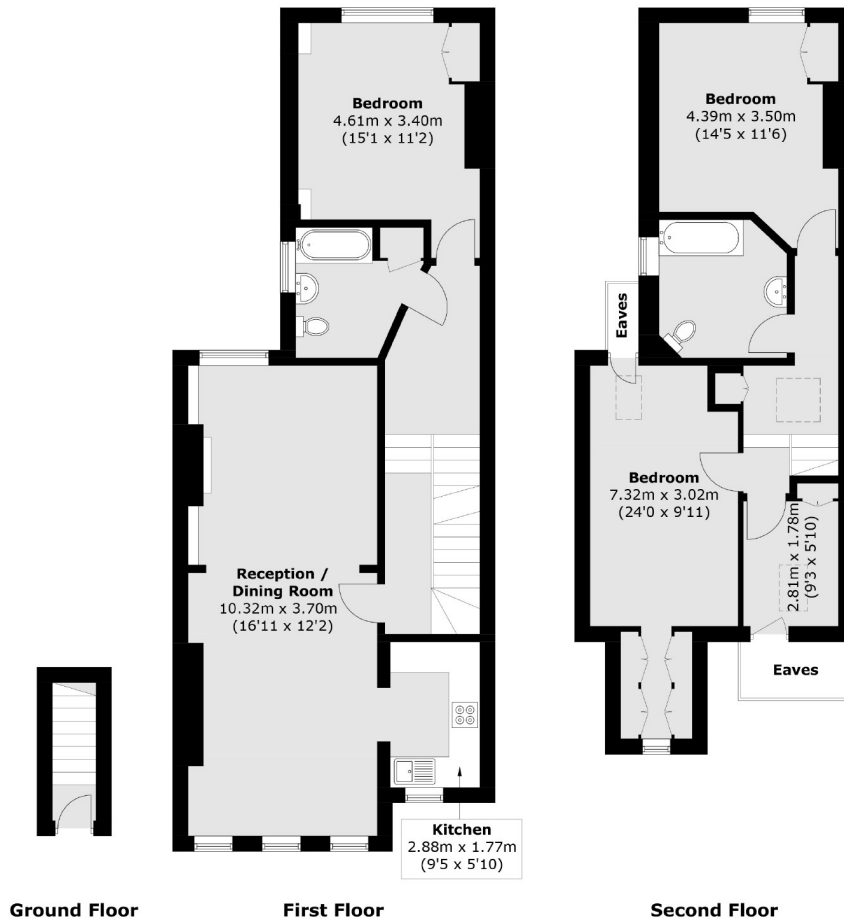
The property has been extended by the current owners, resulting in an abundance of natural light. The large windows and rooflights offer panoramic views of the surrounding area and greenery, creating a serene and uplifting living environment. The property also has 2 recently refurbished bathrooms and 2 large eaves storage locations. The property has also recieved the highest possible EPC rating of C with extensive insulation and double/triple glazing throughout.

This exceptional property is a rare find, offering a perfect blend of space, light, and location.

Valley Road is well located for all the amenities of the area including: many bars, independent coffee shops,







Total area (approx.): 128.5 sq. m (1,383.1 sq. ft)
(Excluding Eaves)

Jacksons Streatham
1-3 De Montfort Parade
Streatham High Road
Streatham
London
SW16 1BU

Energy Rating: C We aim to make our particulars both accurate and reliable. However they are not guaranteed; nor do they form part of an offer or contract. If you require clarification on any points then please contact us, especially if you're traveling some distance to view. Please note that appliances and heating systems have not been tested and therefore no warranties can be given as to their good working order.