



## Abbotswood Road, SW16

£1,250,000

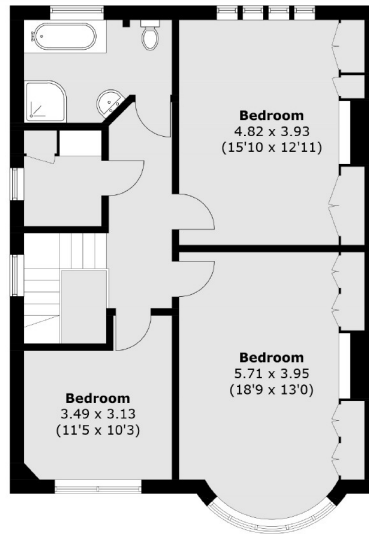
A semi detached 1930's house on a highly sought after road with huge amounts of potential to extend and add value.

- Semi-Detached Project Home
- Large South Facing Garden
- Lots of Scope to Extend
- Off Street Parking
- Popular Common Side Road
- Private Garage

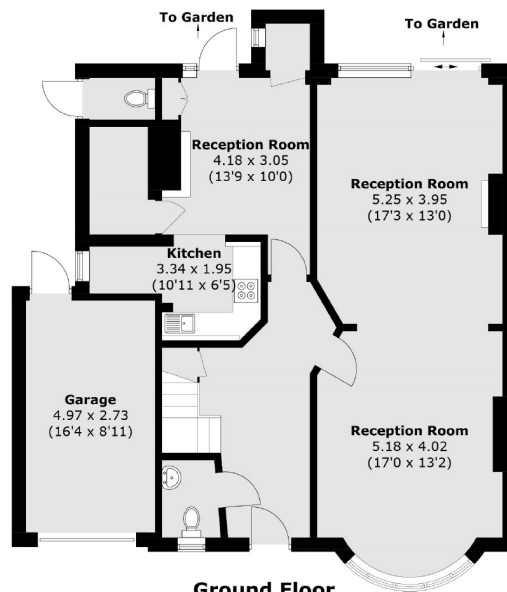


Abbotswood Road is located just off Drewstead road bordering Balham. Streatham Hill mainline, Balham mainline and Balham underground stations are all close by as is Tooting Bec Common. Residents have access to a range of amenities, including excellent schools and independent coffee shops, pubs, bars and restaurants in Balham and Streatham Hill.





First Floor



Ground Floor

Total area (approx.): 167.8 sq. m (1,806.1 sq. ft)

Jacksons Streatham  
1-3 De Montfort Parade  
Streatham High Road  
Streatham  
London  
SW16 1BU

Energy Rating: We aim to make our particulars both accurate and reliable. However they are not guaranteed; nor do they form part of an offer or contract. If you require clarification on any points then please contact us, especially if you're traveling some distance to view. Please note that appliances and heating systems have not been tested and therefore no warranties can be given as to their good working order.