



Babington Road, SW16

£550,000

A first floor, period maisonette in excellent condition with its own private garden and own front door access. It is located on a residential road right in between Tooting Bec Common and Streatham Station.

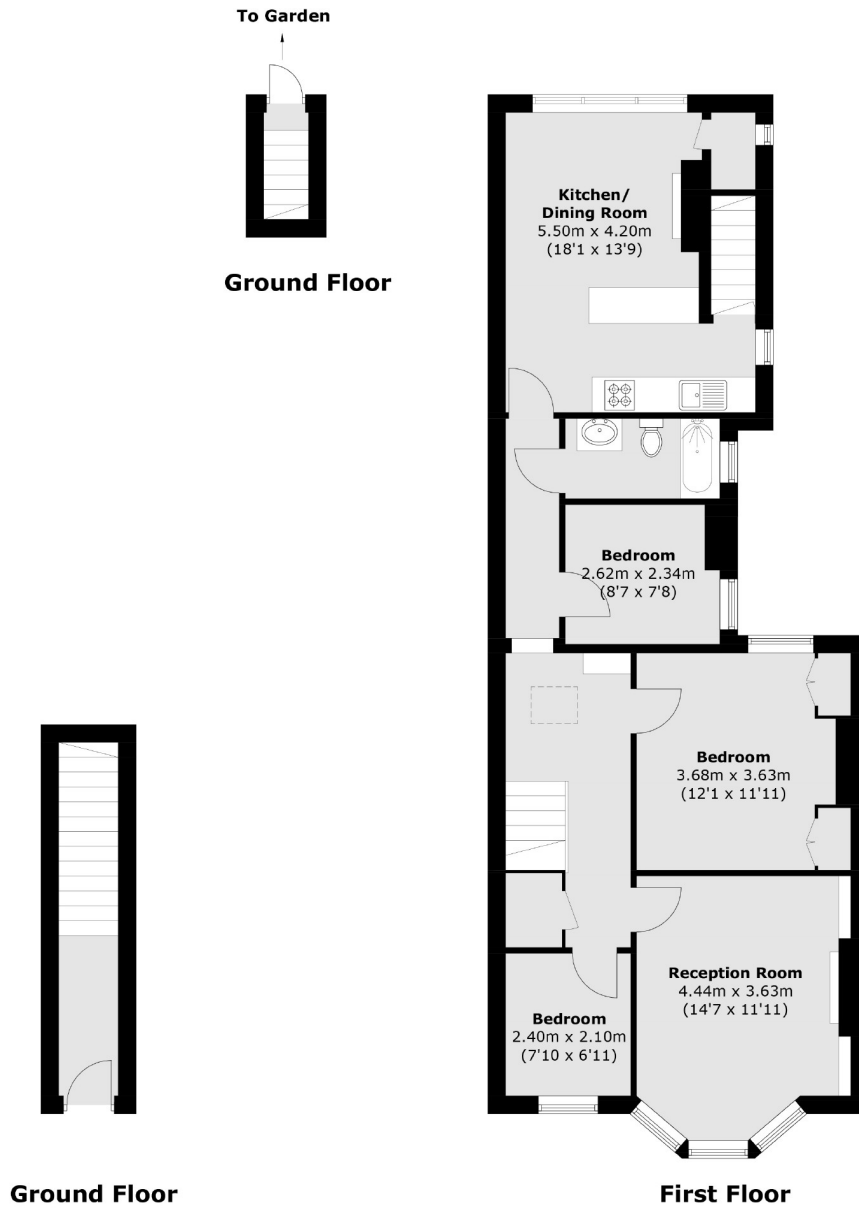
- First-floor Period Maisonette
- Open Plan Kitchen
- Share Of Freehold
- Three Bedrooms
- Excellent Condition
- Private Garden



Babington Road is within close proximity of the major transport connections of Streatham main station and Streatham Common Station providing swift routes to London Bridge, Thameslink Services, and Victoria respectively. The northern line from Tooting Broadway is accessible via a short bus ride. Residents have easy access to an array of amenities including a number of independent cafés, restaurants, bars and pubs. Tooting Bec Common is also nearby.







Total area (approx.): 87.9 sq. m (946.1 sq. ft)

Jacksons Streatham
1-3 De Montfort Parade
Streatham High Road
Streatham
London
SW16 1BU

Energy Rating: We aim to make our particulars both accurate and reliable. However they are not guaranteed; nor do they form part of an offer or contract. If you require clarification on any points then please contact us, especially if you're traveling some distance to view. Please note that appliances and heating systems have not been tested and therefore no warranties can be given as to their good working order.