



## Mount Ephraim Road, SW16

£3,600 PCM

A detached four bedroom family home on a residential road in Streatham Hill. The property has a much larger than average garden and is located nearby the many transport links and amenities Streatham Hill has to offer.

- Detached Home
- Four Double Bedrooms
- Garage & Off Street Parking
- Very Large Garden
- Nearby Tooting Bec Common
- Streatham Hill

For further information on the costs associated with renting a property, please pop into our office or visit our website.

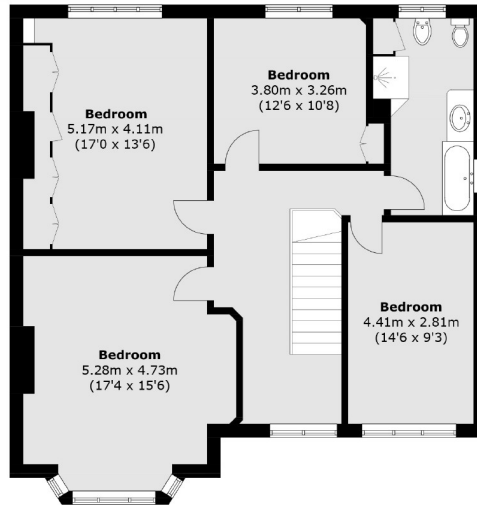
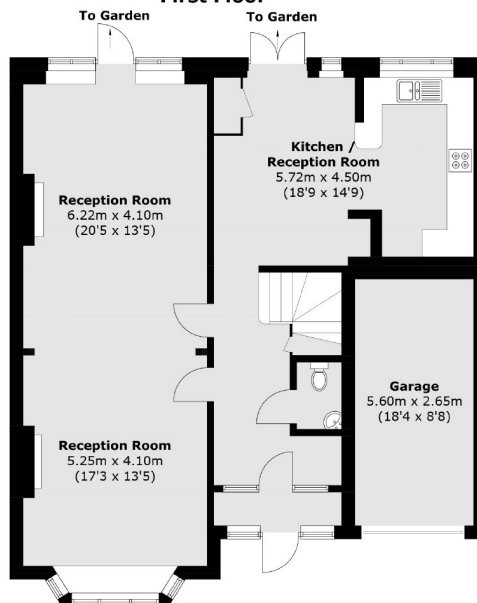




Mount Ephraim Road is a quiet tree lined road located off Streatham High road in Streatham Hill and is one of the most favoured roads in the area. With Balham and Streatham in close proximity there are a variety of restaurants, bars, leisure facilities and cafés. Local schools include, Henry Cavendish, Broomwood Hall and Streatham & Clapham High School. Local transport links include Balham underground station for the Northern Line, Streatham Hill for railway services to London Victoria via Clapham Junction and the Thameslink via Streatham.






**First Floor**

**Ground Floor**

Total area (approx.): 186.6 sq. m (2008.5 sq. ft)  
Garage : 14.6 sq. m (157.1 sq. ft)

Jacksons Streatham  
1-3 De Montfort Parade  
Streatham High Road  
Streatham  
London  
SW16 1BU

Energy Rating: D We aim to make our particulars both accurate and reliable. However they are not guaranteed; nor do they form part of an offer or contract. If you require clarification on any points then please contact us, especially if you're traveling some distance to view. Please note that appliances and heating systems have not been tested and therefore no warranties can be given as to their good working order.