



Valleyfield Road, SW16

£1,250,000

A four bedroom semi-detached family home with off-street parking and a large south facing garden. The house is situated on a popular road with great views of south west London.

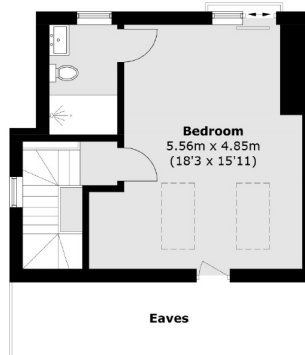
- Semi-Detached
- Five Bedrooms
- Excellent Condition
- Off-Street Parking
- Large South Facing Garden
- Great Views



Valleyfield Road is a very popular residential road predominantly made up of family homes located within close proximity to a number of outstanding schools, local amenities and transport links, including Streatham Rail, West Norwood, Streatham Hill and Streatham Common stations. Residents have easy access to Streatham Common and The Rookery in addition to a number of independent cafes, bars and restaurants. Valleyfield Road also offers eye opening panoramic views of the city.







Second Floor



Ground Floor

First Floor

Total area (approx.): 194.7 sq. m (2,095.7 sq. ft)
(Excluding Eaves)

Jacksons Streatham
1-3 De Montfort Parade
Streatham High Road
Streatham
London
SW16 1BU

Energy Rating: We aim to make our particulars both accurate and reliable. However they are not guaranteed; nor do they form part of an offer or contract. If you require clarification on any points then please contact us, especially if you're traveling some distance to view. Please note that appliances and heating systems have not been tested and therefore no warranties can be given as to their good working order.