



PENISTONE ROAD, SW16

£400,000

- Two double bedrooms
- Two bathrooms
- Open plan kitchen/living
- First floor flat
- Chain free
- Energy rating: D





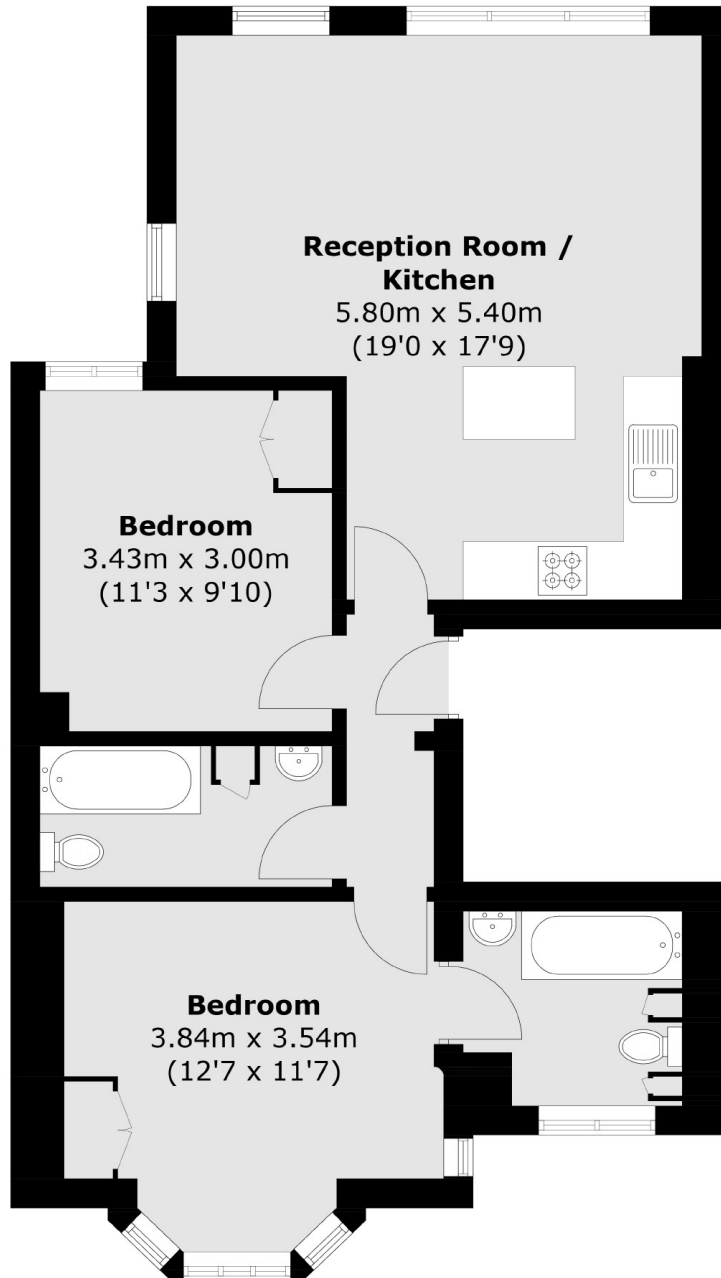
ABOUT THE HOME

A two double bedroom two bathroom first floor period conversion flat, presented in great condition close to Streatham Common.

Penistone Road is ideally located to enjoy the open expanses of Streatham Common and the charming Rookery gardens. The property is within very close proximity of Streatham's hub of transport connections and amenities. These include; numerous bars, independent coffee shops, restaurants, several large supermarkets, leisure centre and health clubs. Commuters are able to access London Bridge, Blackfriars and Victoria with swift services from the two local railway stations.







Total area (approx.): 64.3 sq. m (692.1 sq. ft)

JACKSONS STREATHAM

1-3 De Montfort Parade,
Streatham High Road,
Sales: 020 8487 3179
Lettings: 020 8487 3180

Energy Rating: D We aim to make our particulars both accurate and reliable. However they are not guaranteed; nor do they form part of an offer or contract. If you require clarification on any points then please contact us, especially if you're traveling some distance to view. Please note that appliances and heating systems have not been tested and therefore no warranties can be given as to their good working order.