



Penistone Road, SW16

£695,000

A large mock-Tudor style end of terrace house with private garden and four bedrooms. Situated within walking distance of the Streatham Common.

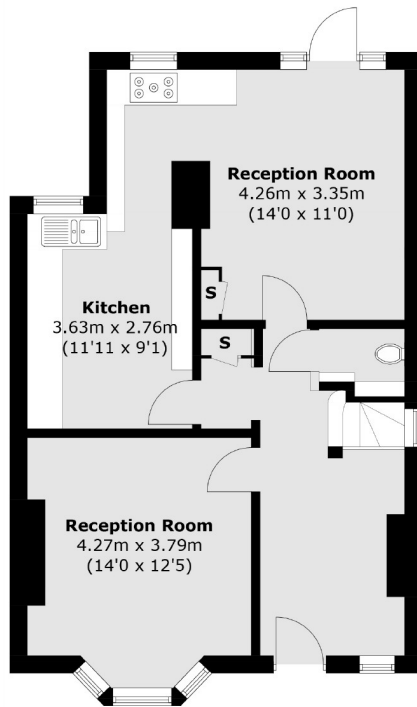
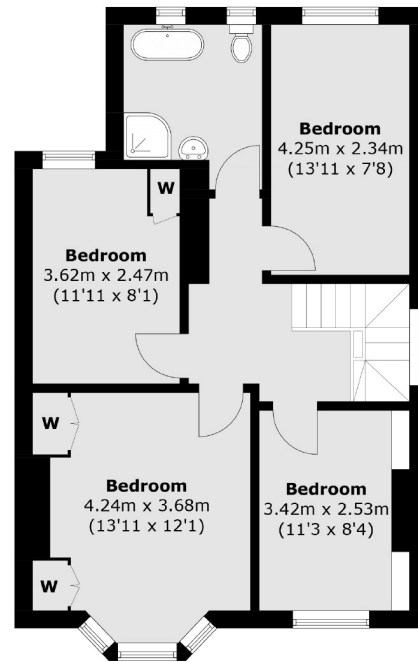
- End of Terrace House
- Four Bedrooms
- Good Condition
- Potential To Extend
- Private Garden
- Close to Park



Penistone Road is ideally located to enjoy the open expanses of Streatham Common and the charming Rookery gardens. The property is within very close proximity of Streatham's hub of transport connections and amenities. These include; numerous bars, independent coffee shops, restaurants, several large supermarkets, leisure centre and health clubs. Commuters are able to access London Bridge, Blackfriars and Victoria with swift services from the two local railway stations.





**Ground Floor****First Floor**

Total area (approx.): 122.2 sq. m (1,315.3 sq. ft)

Jacksons Streatham
1-3 De Montfort Parade
Streatham High Road
Streatham
London
SW16 1BU

Energy Rating: E We aim to make our particulars both accurate and reliable. However they are not guaranteed; nor do they form part of an offer or contract. If you require clarification on any points then please contact us, especially if you're traveling some distance to view. Please note that appliances and heating systems have not been tested and therefore no warranties can be given as to their good working order.