



Streatham High Road, SW16

£395,000

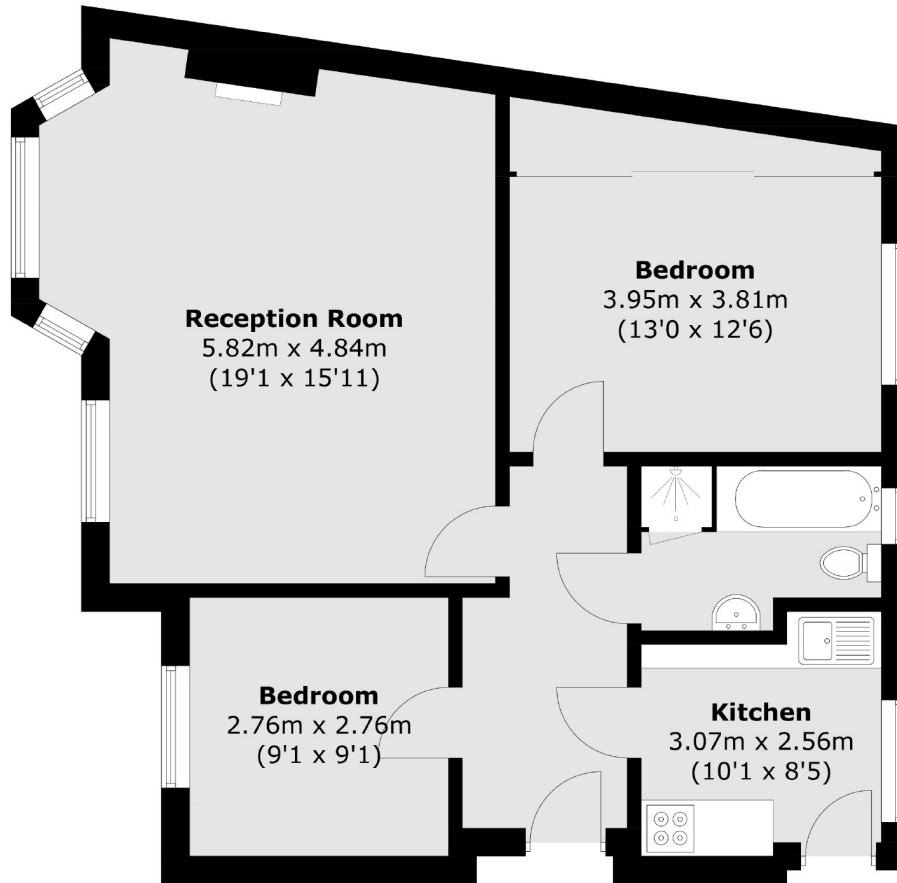
A two bedroom flat in a 1930s mansion block. This property benefits from its excellent condition and is situated in a central location, allowing easy access to several transport links and amenities.

- 1930s Mansion Block
- Two Bedrooms
- Large Reception
- Excellent Condition
- Close to Transport Links
- Close to Amenities



Leigham Hall is a well known 1930's mansion building on Streatham High Road, located moments from many of Streatham's vast array of amenities. Transport is plentiful from this location with many bus routes leading to Brixton and beyond and the local station of Streatham Hill providing swift links to Victoria via Clapham Junction.





Second Floor

Total area (approx.): 65.1 sq. m (700.7 sq. ft)

Jacksons Streatham
1-3 De Montfort Parade
Streatham High Road
Streatham
London
SW16 1BU

Energy Rating: C We aim to make our particulars both accurate and reliable. However they are not guaranteed; nor do they form part of an offer or contract. If you require clarification on any points then please contact us, especially if you're traveling some distance to view. Please note that appliances and heating systems have not been tested and therefore no warranties can be given as to their good working order.