



Voss Court, SW16

£350,000

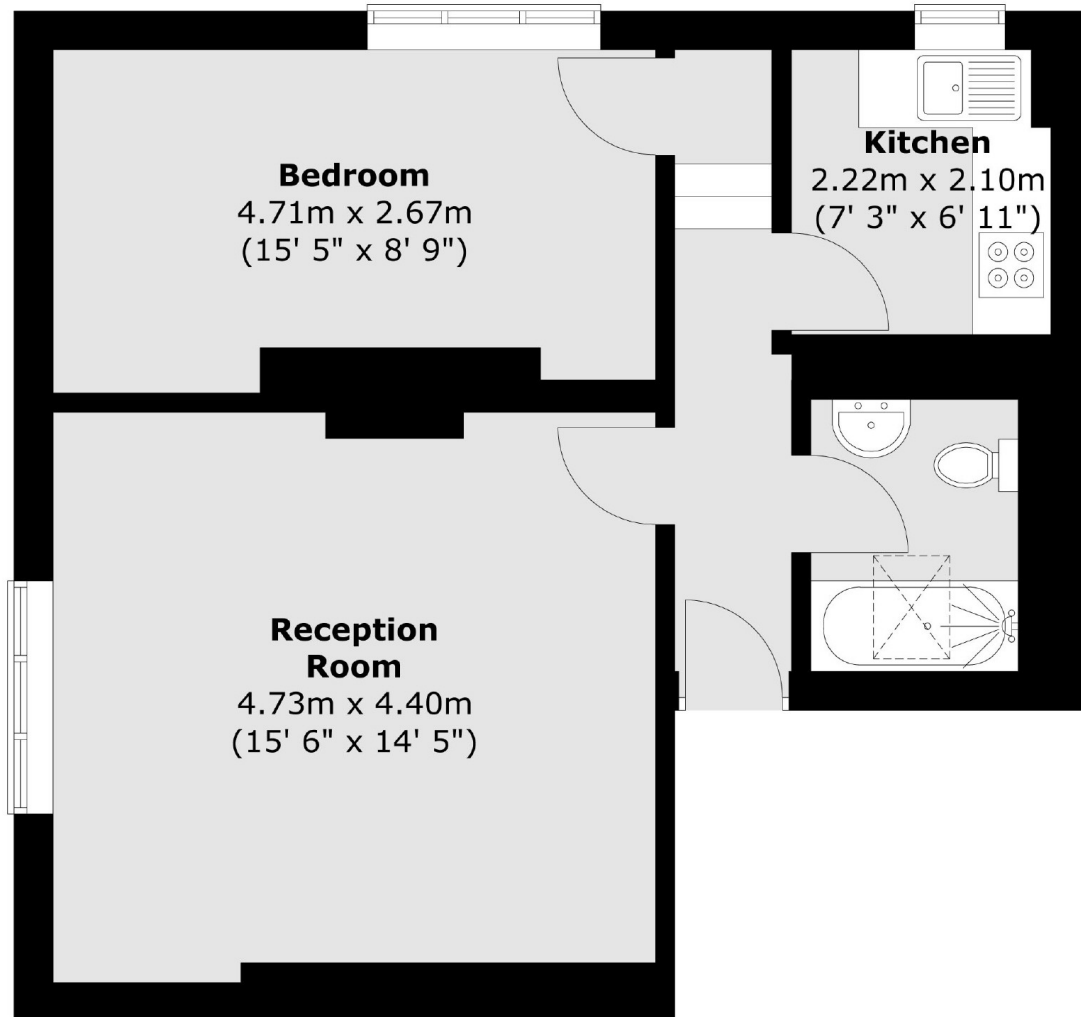
A charming recently refurbished one bed period conversion flat off of Streatham Common.

- Period Conversion Flat
- One Bedroom
- Excellent Condition
- Separate Kitchen/Reception
- Lots Of Storage
- Nearby Amenities & Transport



With Streatham Common on its door step, Voss Court is within close proximity of Streatham's hub of transport connections and amenities. These include numerous bars, independent coffee shops, restaurants, large supermarkets and a leisure centre which includes a public swimming pool and ice rink. Commuters are able to access London Bridge, Blackfriars and Victoria with swift services from the three local railway stations. The bus links also provide services direct to Brixton tube station within a short journey of fifteen minutes.





Total area (approx.) : 48.3 sq. m (520 sq. ft)

Jacksons Streatham
1-3 De Montfort Parade
Streatham High Road
Streatham
London
SW16 1BU

Energy Rating: D We aim to make our particulars both accurate and reliable. However they are not guaranteed; nor do they form part of an offer or contract. If you require clarification on any points then please contact us, especially if you're traveling some distance to view. Please note that appliances and heating systems have not been tested and therefore no warranties can be given as to their good working order.