



Gracefield Gardens, SW16

£695,000

A beautiful and high spec two bedroom end of terrace maisonette which has been renovated to a high standard by the current owners and is located just round the corner from Tooting Bec Common, Streatham Hill and Streatham Main Station.

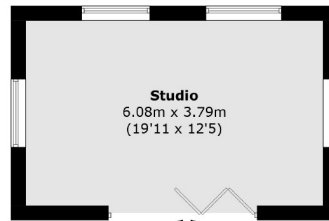
- High Spec Extended Maisonette
- Two Double Bedrooms
- Garden Studio
- Open Plan Kitchen
- South Facing Garden
- Close to Local Amenities/Shops



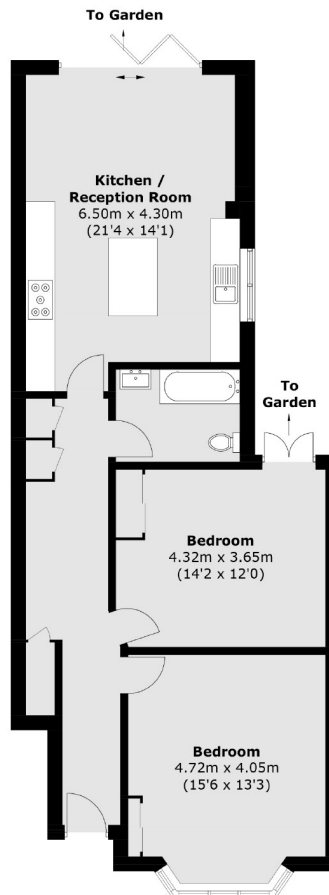
Further benefits of the flat include a large south facing garden and a large garden studio; which boasts wifi, Air-con and heating facilities .

Gracefield Gardens is perfectly placed for the plethora of amenities of Streatham High Road and is within easy reach of Streatham Hill mainline station providing rail links to London Victoria via Clapham Junction. The shops, bars and restaurants of the high road and the wide expanses of Tooting Common are all within close proximity.





(Not Shown In Actual
Location / Orientation)



Total area (approx.): 83.1 sq. m (894.5 sq. ft)
Outbuilding (approx.): 23.6 sq. m (254.0 sq. ft)

Jacksons Streatham
1-3 De Montfort Parade
Streatham High Road
Streatham
London
SW16 1BU

Energy Rating: We aim to make our particulars both accurate and reliable. However they are not guaranteed; nor do they form part of an offer or contract. If you require clarification on any points then please contact us, especially if you're traveling some distance to view. Please note that appliances and heating systems have not been tested and therefore no warranties can be given as to their good working order.