



## Aldington Road, SW16

£375,000

A well presented three bedroom purpose built flat with a sizeable reception room and separate kitchen.

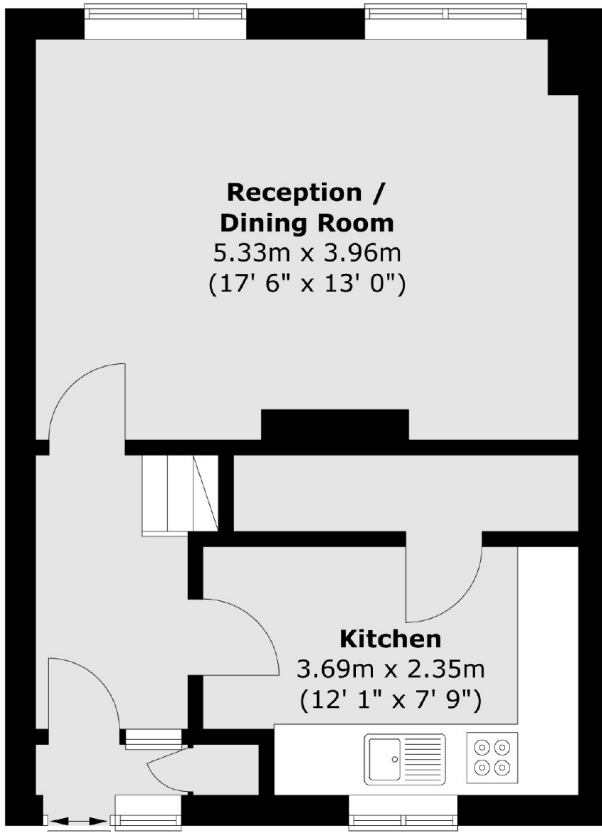
- Wandsworth Council Tax
- In Excess Of 900sqft
- Three Bedrooms
- Tooting Bec Common Nearby



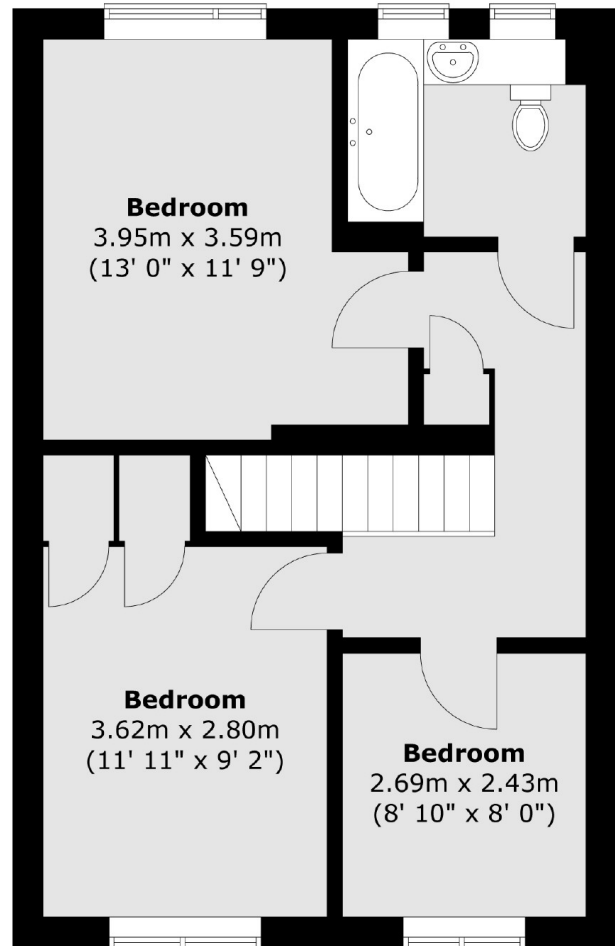
Moorfields Court is a well maintained building, surrounded by pleasant communal gardens on Aldington Road within Wandsworth Borough. Tooting Bec Common is in close proximity as are the local amenities, shops and restaurants of Tooting and Streatham. Transport options include the Northern Line underground at Tooting Bec, mainline train station at Streatham and local buses.



**Ground Floor**



**First Floor**



Total area (approx.) : 86.3 sq. m (929 sq. ft)

Jacksons Streatham  
1-3 De Montfort Parade  
Streatham High Road  
Streatham  
London  
SW16 1BU

Energy Rating: C We aim to make our particulars both accurate and reliable. However they are not guaranteed; nor do they form part of an offer or contract. If you require clarification on any points then please contact us, especially if you're traveling some distance to view. Please note that appliances and heating systems have not been tested and therefore no warranties can be given as to their good working order.