



Hopton Road, SW16

£325,000

A top floor Victorian Converted flat. This property is in excellent condition with a large double bedroom, reception room and newly refurbished bathroom & kitchen. It also benefits from significant storage space and has a private

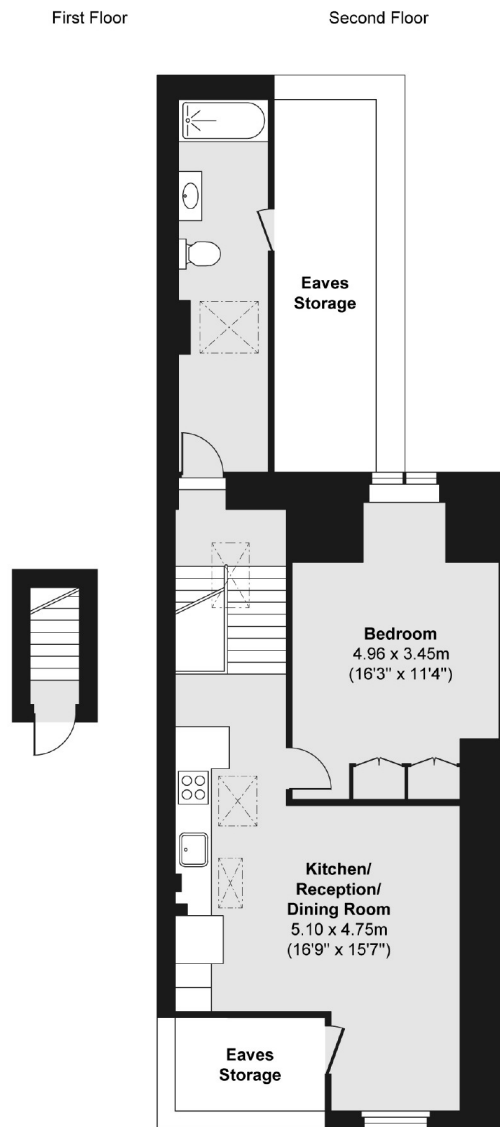
- One Bedroom
- Period Conversion
- Private Garden
- Nearby Streatham Common
- Excellent Condition
- Great Transport Connections



Hopton Road is a quiet residential street conveniently located off Streatham High Road. Numerous amenities are close by, including; independent pubs, restaurants and coffee shops, alongside several supermarkets, a leisure centre and Streatham Common. Streatham mainline station is also in close proximity and offers commuters quick services in to London Bridge and the Thameslink line via Blackfriars.







Total area (approx.) 55.77 sq. m (600 sq. ft)

Jacksons Streatham
1-3 De Montfort Parade
Streatham High Road
Streatham
London
SW16 1BU

Energy Rating: We aim to make our particulars both accurate and reliable. However they are not guaranteed; nor do they form part of an offer or contract. If you require clarification on any points then please contact us, especially if you're traveling some distance to view. Please note that appliances and heating systems have not been tested and therefore no warranties can be given as to their good working order.