



Wellfield Road, SW16

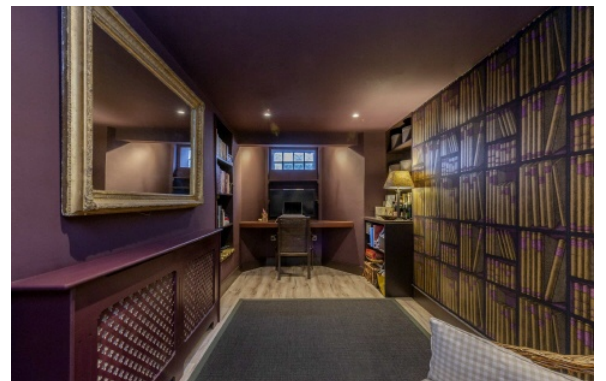
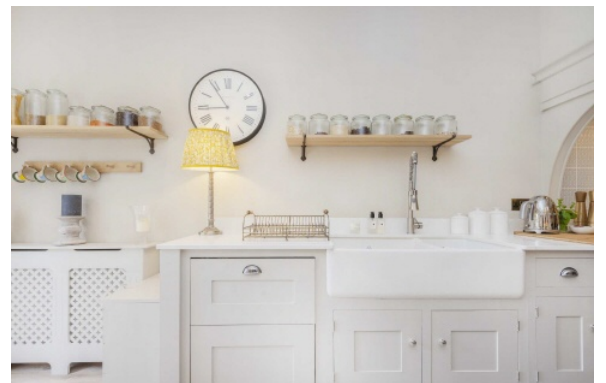
£950,000

A high spec Victorian terraced family home on a popular road in central Streatham. The house has been meticulously renovated to a high standard by the current owners and has a beautiful south facing landscaped garden.

- High Spec Victorian House
- Open Plan Kitchen/Living Room
- Three Double Bedrooms
- Recently Refurbished
- South Facing Garden
- Highly Desired Road



Wellfield Road is well located for the local amenities that Streatham has to offer including an array of bars, restaurants, supermarkets and the new Streatham Hub development. Streatham station offers a Thames Link service into the city and there are multiple bus services available.







Total area (approx.): 155.5 sq. m (1,673.7 sq. ft)
(Excluding Eaves)

Jacksons Streatham
1-3 De Montfort Parade
Streatham High Road
Streatham
London
SW16 1BU

Energy Rating: D We aim to make our particulars both accurate and reliable. However they are not guaranteed; nor do they form part of an offer or contract. If you require clarification on any points then please contact us, especially if you're traveling some distance to view. Please note that appliances and heating systems have not been tested and therefore no warranties can be given as to their good working order.