



Mount Ephraim Road, SW16

£500,000

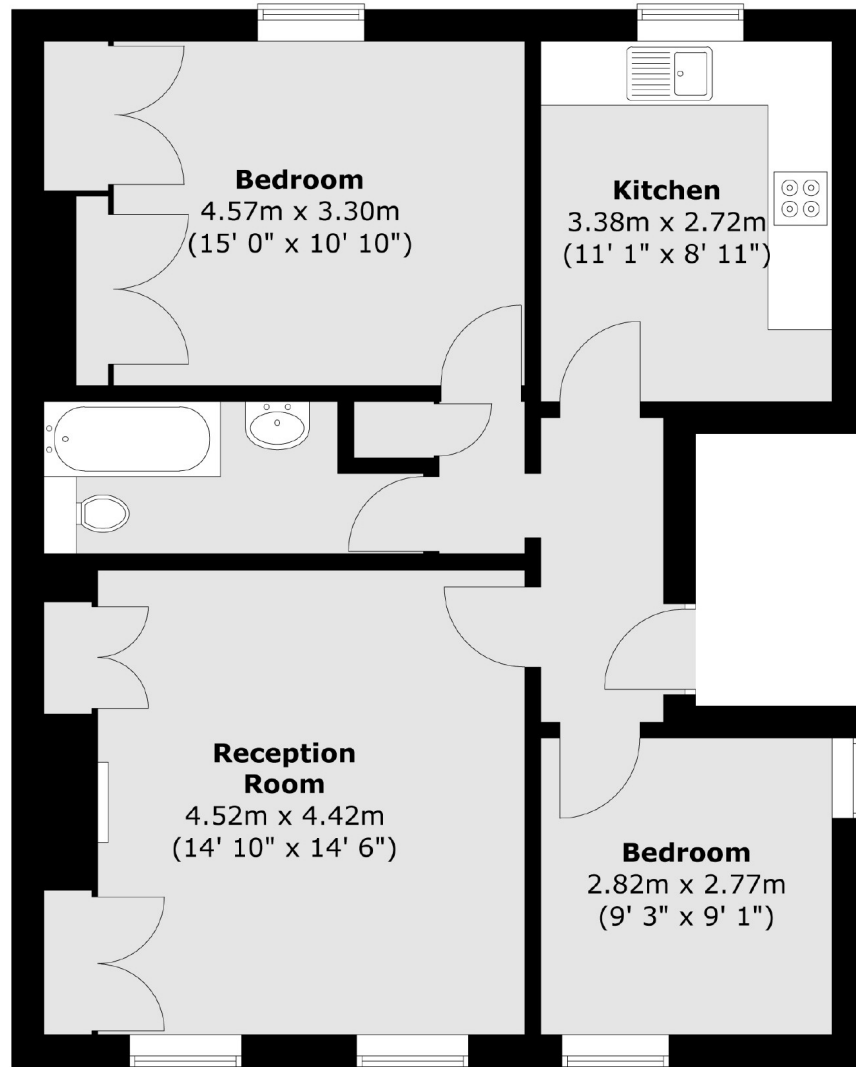
An immaculately presented two bedroom flat next to Tooting Bec Common. This property is close to amenities along Streatham High Road, and is in excellent condition.

- Period Converted Flat
- Two Double Bedrooms
- Next to Tooting Common
- Excellent Condition
- Streatham Hill
- Share Of Freehold



Mount Ephraim Road is within very close proximity of Streatham Hill's amenities including numerous cafes, restaurants, bars and both independent and high street retailers. Numerous buses leading to Brixton and the centre of London can be found on the high road and Streatham Hill railway station provides regular services to Victoria via Clapham Junction.



Second Floor

Total area (approx.) : 65.9 sq. m (709 sq. ft)

Jacksons Streatham
1-3 De Montfort Parade
Streatham High Road
Streatham
London
SW16 1BU

Energy Rating: We aim to make our particulars both accurate and reliable. However they are not guaranteed; nor do they form part of an offer or contract. If you require clarification on any points then please contact us, especially if you're traveling some distance to view. Please note that appliances and heating systems have not been tested and therefore no warranties can be given as to their good working order.