



Gaumont Place, SW2

£2,400 PCM

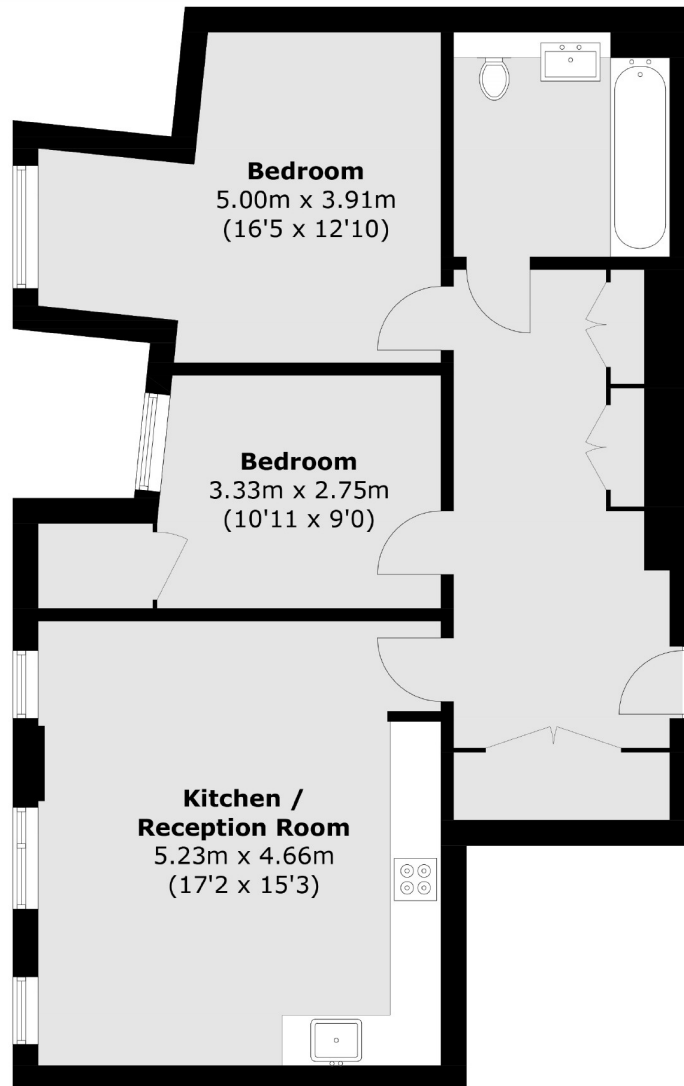
A well presented newly built two bedroom apartment in the London Square development. London Square is a prime modern development in the heart of Streatham Hill.

- Modern Apartment
- Two double bedrooms
- Concierge
- Allocated parking space
- Residents Gym
- High Specification
- Communal gardens
- Streatham Hill Location

For further information on the costs associated with renting a property, please pop into our office or visit our website.



Gaumont Place is part of the new London Square development in the heart of Streatham Hill, moments from Streatham Hill station with direct trains to London Victoria. Streatham High road, and its array of local bus routes, shops and other amenities are close by.



Total area (approx.): 76.6 sq. m (824.5 sq. ft)

Jacksons Streatham
1-3 De Montfort Parade
Streatham High Road
Streatham
London
SW16 1BU

Energy Rating: We aim to make our particulars both accurate and reliable. However they are not guaranteed; nor do they form part of an offer or contract. If you require clarification on any points then please contact us, especially if you're traveling some distance to view. Please note that appliances and heating systems have not been tested and therefore no warranties can be given as to their good working order.