

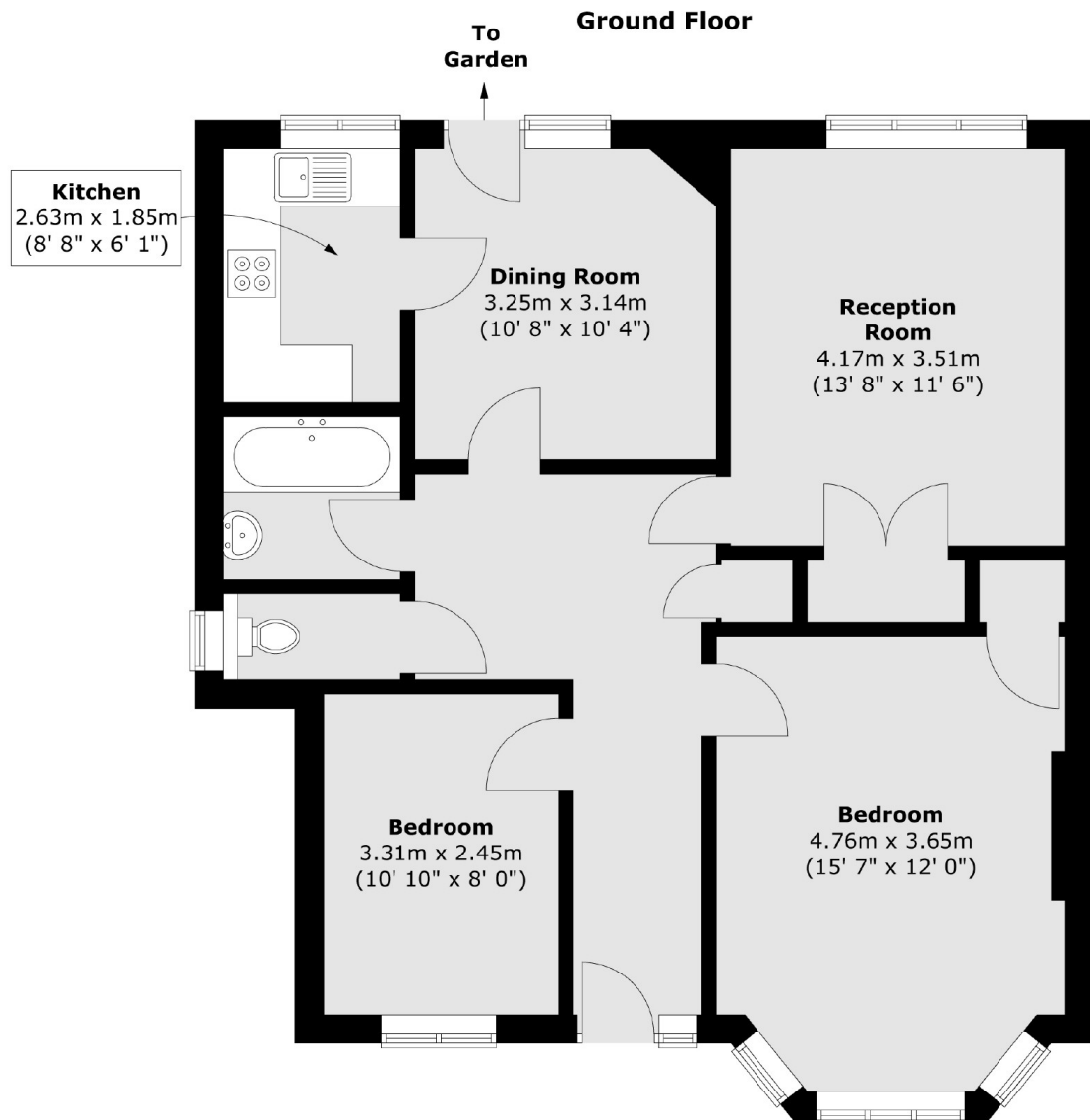


Woodleigh Gardens, SW16

£490,000

A large two bedroom maisonette. This property provides the opportunity to modernise and benefits from being situated in central Streatham, allowing easy access to amenities and transport links.

- Ground Floor Maisonette
- Two Bedrooms
- Private Garden
- Scope to Improve
- Close to Amenities
- Good Access to Transport Links



Total area (approx.) : 78.2 sq. m (842 sq. ft)

Jacksons Streatham
1-3 De Montfort Parade
Streatham High Road
Streatham
London
SW16 1BU
020 8677 9900

Energy Rating: D We aim to make our particulars both accurate and reliable. However they are not guaranteed; nor do they form part of an offer or contract. If you require clarification on any points then please contact us, especially if you're traveling some distance to view. Please note that appliances and heating systems have not been tested and therefore no warranties can be given as to their good working order.