



Henry Tate Mews, SW16

£925,000

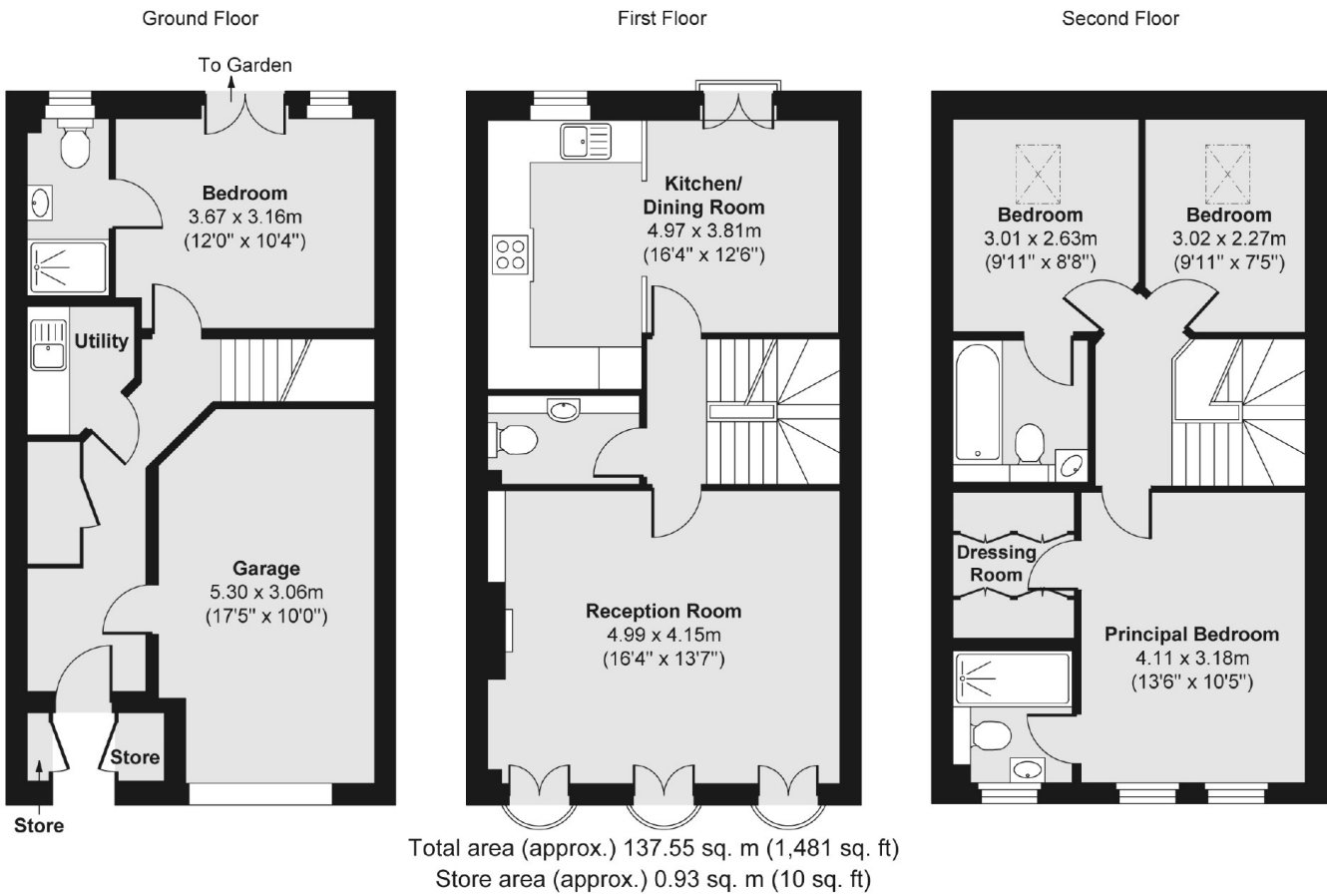
A four bedroom town house situated in a gated community alongside Streatham Common. This property benefits from off-street parking, a garage, private garden and is in very good condition. Additional access to the beautiful grounds spaces.

- Four Double Bedrooms
- Town House
- Parking & Garage
- Private Garden
- Gated Community
- Wonderfully Grounds



Henry Tate Mews is situated off Streatham Common North, adjacent to Streatham Common itself, offering easy access to Streatham Common Station and the High Road with its selection of bars, restaurants and coffee shops.





Jacksons Streatham
 1-3 De Montfort Parade
 Streatham High Road
 Streatham
 London
 SW16 1BU

Energy Rating: C We aim to make our particulars both accurate and reliable. However they are not guaranteed; nor do they form part of an offer or contract. If you require clarification on any points then please contact us, especially if you're traveling some distance to view. Please note that appliances and heating systems have not been tested and therefore no warranties can be given as to their good working order.