



GRACEFIELD GARDENS, SW16

£465,000

- Purpose built maisonette
- Requires modernisation
- Two bedrooms
- Central location
- Long lease
- Energy rating: E

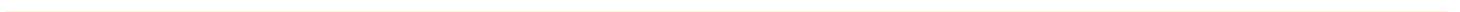




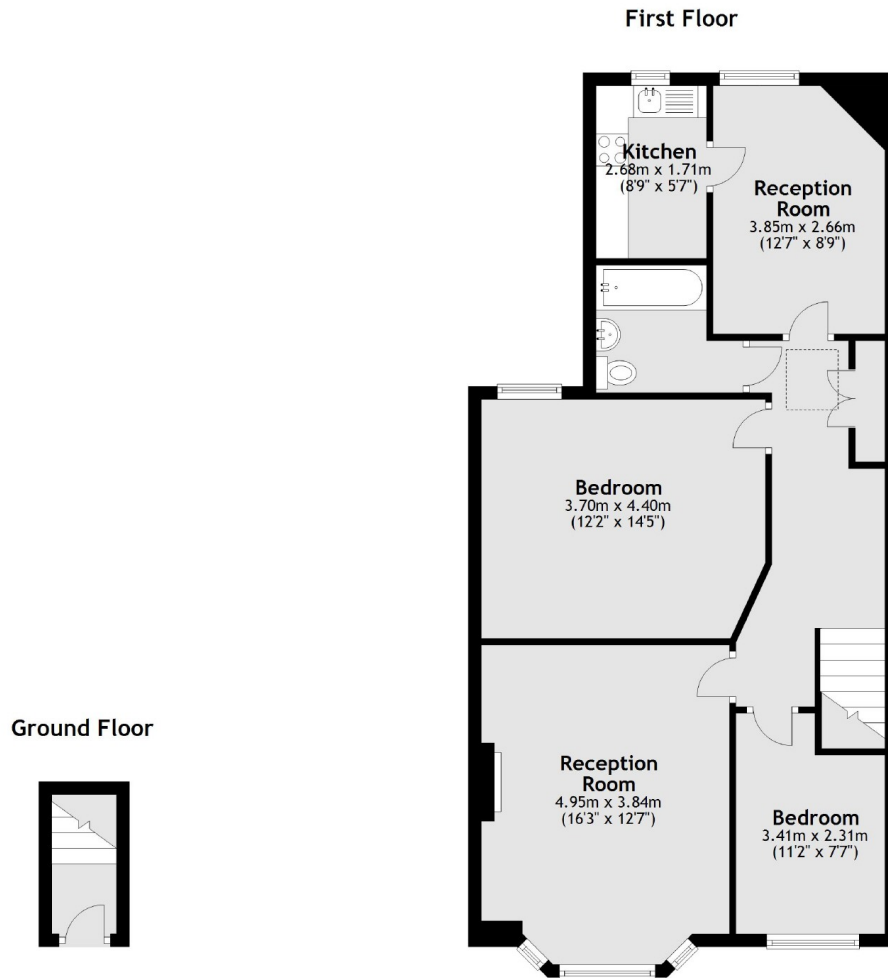
ABOUT THE HOME

A first floor purpose built maisonette on a sought after road in Streatham Hill. The property would benefit from a programme of modernisation.

Gracefield Gardens is situated in a sought after location placed for the plethora of amenities of Streatham High Road. It is within easy reach of Streatham Hill mainline station which provides rail links to London Victoria via Clapham Junction. The shops, bars and restaurants of the high road and the wide expanses of Tooting Common are all within close proximity.







Total area: approx. 76.6 sq. metres (824.6 sq. feet)

JACKSONS STREATHAM

1-3 De Montfort Parade,
Streatham High Road,
Sales: 020 8487 3179
Lettings: 020 8487 3180

Energy Rating: E We aim to make our particulars both accurate and reliable. However they are not guaranteed; nor do they form part of an offer or contract. If you require clarification on any points then please contact us, especially if you're traveling some distance to view. Please note that appliances and heating systems have not been tested and therefore no warranties can be given as to their good working order.