



Stockfield Road, SW16

£1,100,000

A semi detached five bed Victorian house on a quiet road in between Streatham Hill and Tulse Hill stations. The property is in great condition with newly refurbished en-suite bathrooms, landscape garden and is being sold chain free.

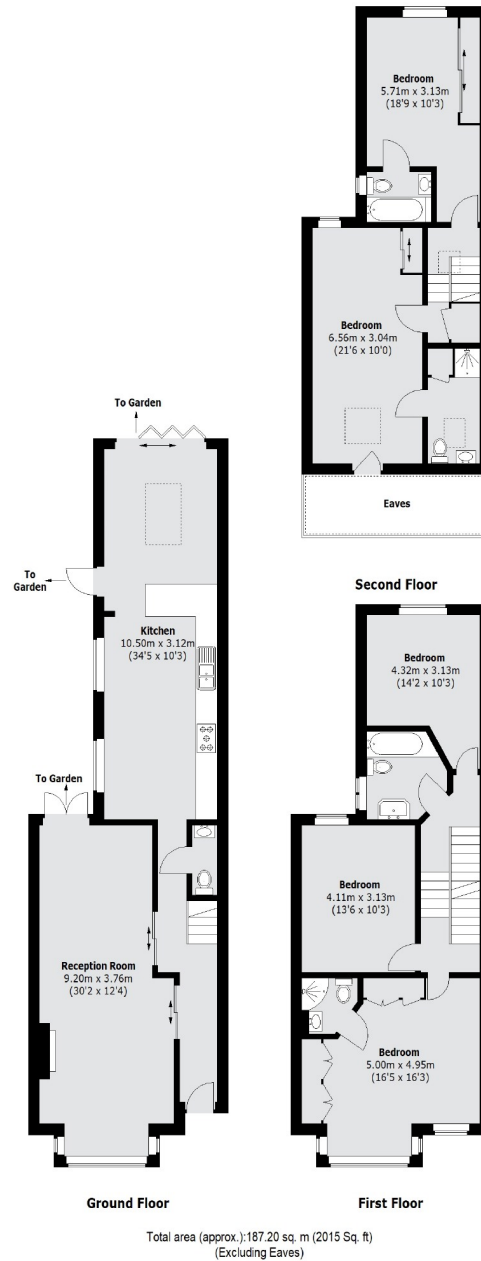
- Semi Detached Period House
- Five Double Bedrooms
- Four Bathrooms
- Recently Refurbished
- Large Landscaped Garden
- Streatham Hill/Tulse Hill Station



Positioned in between Streatham Hill and Tulse Hill, this house is perfectly located for numerous transport links, including fast services into London Bridge, Victoria and the Thameslink line. Streatham Hill and Tulse Hill offer a variety of independent pubs, coffee shops and restaurants, alongside numerous supermarkets, gyms and shops.







Jacksons Streatham
1-3 De Montfort Parade
Streatham High Road
Streatham
London
SW16 1BU

Energy Rating: C We aim to make our particulars both accurate and reliable. However they are not guaranteed; nor do they form part of an offer or contract. If you require clarification on any points then please contact us, especially if you're traveling some distance to view. Please note that appliances and heating systems have not been tested and therefore no warranties can be given as to their good working order.