



Leigham Vale, SW16

£495,000

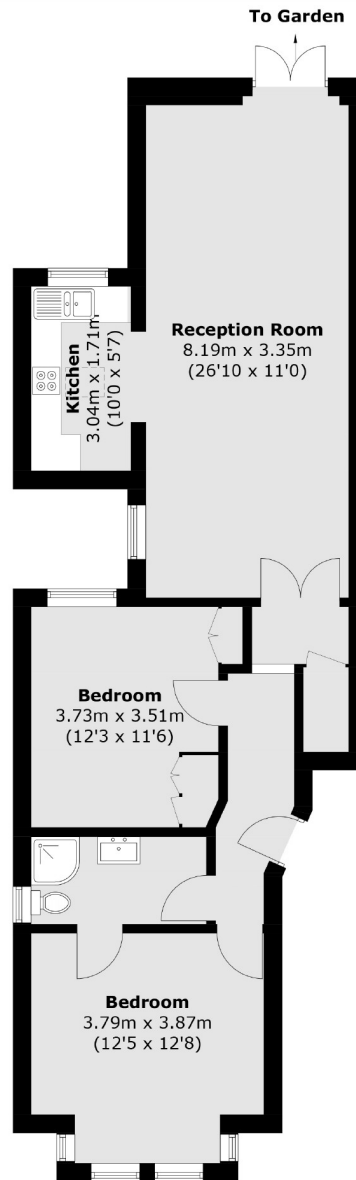
A well-presented Victorian two bedroom ground floor garden flat that benefits from a private garden and is well situated for access to multiple train stations including Streatham Hill, Tulse Hill, and West Norwood.

- Victorian Converted Flat
- Two Double Bedrooms
- Great Condition
- Private Garden
- Great Proximity To Transport
- Share Of Freehold



Leigham Vale is well located for all the amenities of the surrounding area including many bars, independent coffee shops, restaurants, large supermarkets, leisure centre and health clubs. Streatham Hill and Tulse Hill mainline stations with links to Clapham Junction, Victoria, London Bridge and a number of other locations are also close by. The property is also conveniently situated within the catchment areas of Dunraven School and Hitherfield Primary School.





Total area (approx.): 72.8 sq. m (783.6 sq. ft)

Jacksons Streatham
1-3 De Montfort Parade
Streatham High Road
Streatham
London
SW16 1BU

Energy Rating: C We aim to make our particulars both accurate and reliable. However they are not guaranteed; nor do they form part of an offer or contract. If you require clarification on any points then please contact us, especially if you're traveling some distance to view. Please note that appliances and heating systems have not been tested and therefore no warranties can be given as to their good working order.