



Tierney Road, SW2

£1,640,000

A grand Victorian family home on a beautiful residential road in Streatham Hill, boasting six double bedrooms, 3287 Sq Ft and benefits from having off-street parking and is being sold chain free.

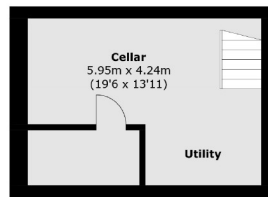
- Victorian House
- Six Double Bedrooms
- Off-Street Parking
- Chain Free
- 3287 Sq.Ft
- Streatham Hill



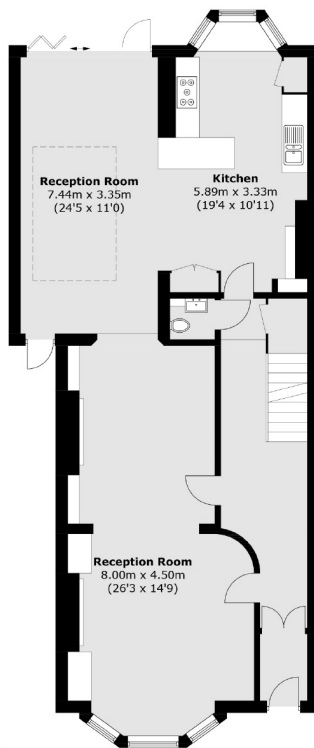
Tierney Road is well located near Brixton Hill and Streatham Hill. It offers excellent access to numerous bus routes to Central London. Streatham Hill Mainline, Brixton (Victoria line) and Clapham South (Northern line) underground station are all easily accessible. The restaurants and amenities of Streatham Hill and Brixton are also close by.



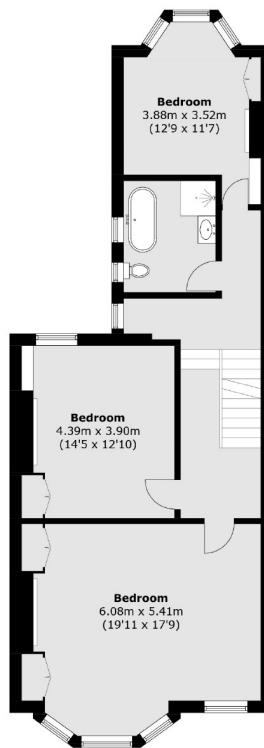




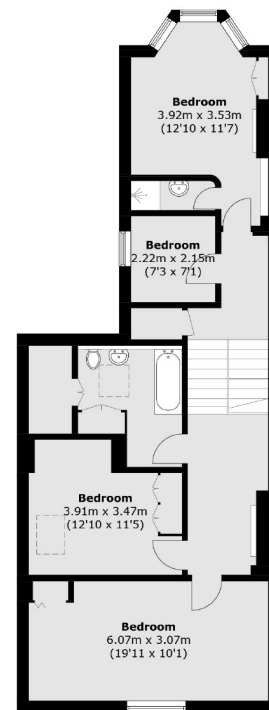
Cellar



Ground Floor



First Floor



Second Floor

Total area (approx.): 305.4 sq. m (3,287.2 sq. ft)
(Including Cellar)

Jacksons Streatham
1-3 De Montfort Parade
Streatham High Road
Streatham
London
SW16 1BU

Energy Rating: D We aim to make our particulars both accurate and reliable. However they are not guaranteed; nor do they form part of an offer or contract. If you require clarification on any points then please contact us, especially if you're traveling some distance to view. Please note that appliances and heating systems have not been tested and therefore no warranties can be given as to their good working order.