



Bakewell Mews

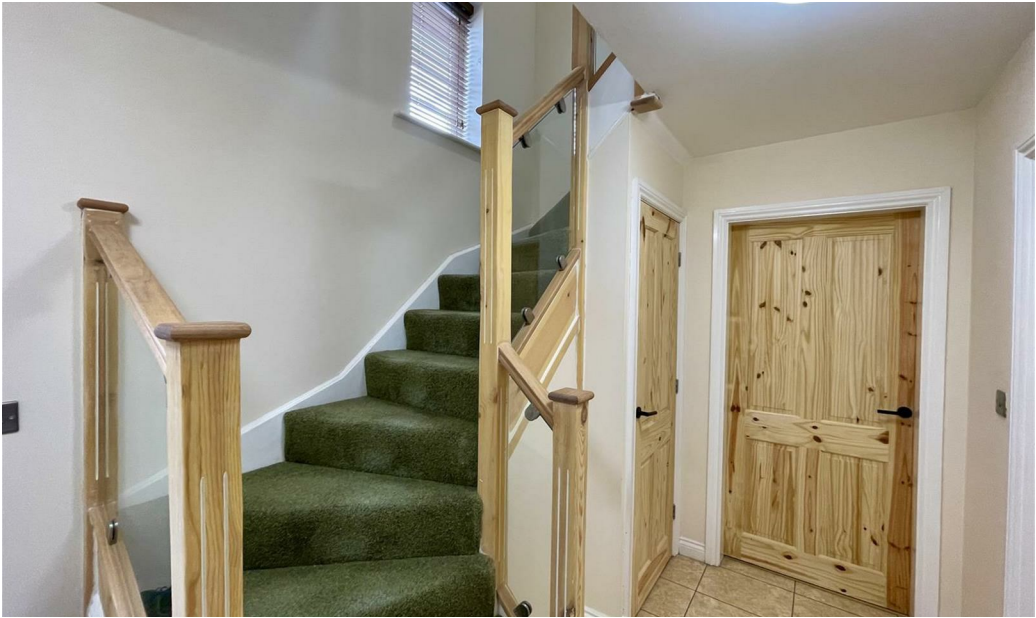
Darlington DL2 2FB

£180,000





This footer paragraph is an example only and should not be relied upon as complying with current legislation. These particulars, whilst believed to be accurate are set out as a general outline only for guidance and do not constitute any part of an offer or contract. Intending purchasers should not rely on them as statements of representation of fact, but must satisfy themselves by inspection or otherwise as to their accuracy. No person in this firms employment has the authority to make or give any representation or warranty in respect of the property.



This footer paragraph is an example only and should not be relied upon as complying with current legislation. These particulars, whilst believed to be accurate are set out as a general outline only for guidance and do not constitute any part of an offer or contract. Intending purchasers should not rely on them as statements of representation of fact, but must satisfy themselves by inspection or otherwise as to their accuracy. No person in this firms employment has the authority to make or give any representation or warranty in respect of the property.



This footer paragraph is an example only and should not be relied upon as complying with current legislation. These particulars, whilst believed to be accurate are set out as a general outline only for guidance and do not constitute any part of an offer or contract. Intending purchasers should not rely on them as statements of representation of fact, but must satisfy themselves by inspection or otherwise as to their accuracy. No person in this firms employment has the authority to make or give any representation or warranty in respect of the property.



This footer paragraph is an example only and should not be relied upon as complying with current legislation. These particulars, whilst believed to be accurate are set out as a general outline only for guidance and do not constitute any part of an offer or contract. Intending purchasers should not rely on them as statements of representation of fact, but must satisfy themselves by inspection or otherwise as to their accuracy. No person in this firm's employment has the authority to make or give any representation or warranty in respect of the property.

Bakewell Mews

Darlington DL2 2FB



- Three Bedroom Property
 - Close to Amenities
 - EPC Rating C
- Popular West Park Location
 - Ideal for Dog Walkers
- Garage
 - Council Tax Band C

Welcome to Bakewell Mews, Darlington - a charming location that could be the perfect setting for your new home! This property offers a spacious and modern living experience with three bedrooms, ideal for a growing family or those in need of extra space.

The modern interior adds a touch of elegance to the property, making it a delightful place to call home.

Outside, you'll find well-maintained gardens where you can enjoy the fresh air and perhaps even try your hand at gardening. The added bonus of a garage ensures that your vehicle is kept safe and secure.

Located in the sought-after West Park area, this property offers not just a home, but a lifestyle. With its convenient location, modern amenities, and spacious layout, this house is truly a gem waiting to be discovered. Don't miss out on the opportunity to view this wonderful property - book a viewing today and envision the possibilities that await you at Bakewell Mews!

Entrance Hall
Composite door to front, staircase to first floor with storage under and radiator.

Downstairs Cloaks
Upvc double glazed window to front, w.c, wash hand basin and radiator.

Lounge
13'10 x 10'9 (4.22m x 3.28m)
Upvc double glazed window to rear and two radiators.

Kitchen/Diner
18'11 x 10'3 (5.77m x 3.12m)
Upvc double glazed window to rear, fitted with wall, base and drawer units, stainless steel sink with mixer tap, electric hob with extractor over and oven. There is space for a washing machine, fridge and freezer. Radiator and French doors to rear.

First Floor Landing
Upvc double glazed window to front and access to loft via drop down ladder.

Bedroom One
11'3 x 11'2 (3.43m x 3.40m)
Upvc double glazed window to front, fitted wardrobes and radiator.

En-Suite
Walk in shower cubicle, w.c, wash hand basin and radiator.

Bedroom Two
13'1 x 11'2 (3.99m x 3.40m)
Upvc double glazed window to rear and radiator.

Bedroom Three
9'7 x 7'6 (2.92m x 2.29m)
Upvc double glazed window to front and radiator.

Bathroom
Upvc double glazed window to front, bath, w.c, wash hand basin and radiator.

Externally
To the front laid to artificial lawn and provides access to garage which has electric roller shutter door.

Tenure
Freehold

Property Details
Local Authority: Darlington
Council Tax Band: C
Annual Price: £2,108
Conservation Area No
Flood Risk Very low
Floor Area 957 ft 2 / 89 m 2
Plot size 0.05 acres
Mobile coverage

EE
Vodafone

Three
O2
Broadband

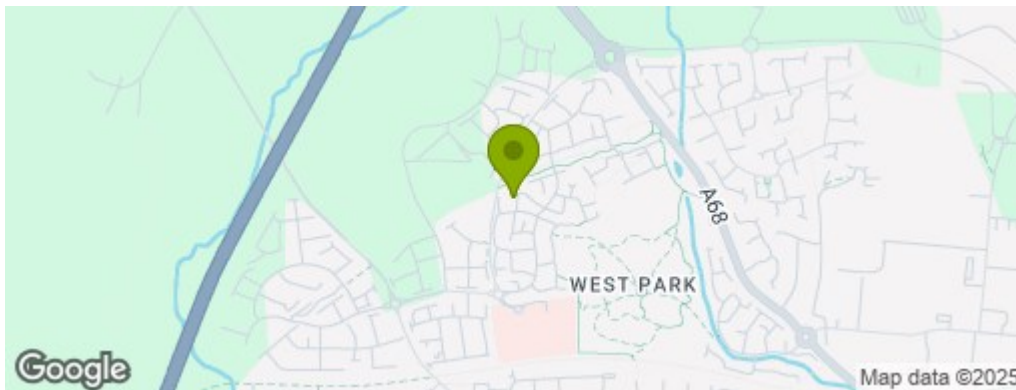
Basic
6 Mbps
Superfast
78 Mbps
Ultrafast
10000 Mbps
Satellite / Fibre TV Availability

BT
Sky
Virgin

Note
IMPORTANT NOTE TO PURCHASERS: We endeavour to make our sales particulars accurate and reliable, however, they do not constitute or form part of an offer or any contract and none is to be relied upon as statements of representation or fact. The services, systems and appliances listed in this specification have not been tested by us and no guarantee as to their operating ability or efficiency is given. All measurements have been taken as a guide to prospective buyers only, and are not precise. Floor plans where included are not to scale and accuracy is not guaranteed. If you require clarification or further information on any points, please contact us, especially if you are travelling some distance to view. Fixtures and fittings other than those mentioned are to be agreed with the seller.



Whilst every attempt has been made to ensure the accuracy of the floorplan contained here, measurements of plans, dimensions, rooms and any other items are approximate and no responsibility is taken for any error, omission or misstatement. This plan is for illustrative purposes only and should be used as such by any prospective purchaser. The services, systems and appliances shown have not been tested and no guarantee as to their operability or efficiency can be given.
Made with Mapbox ©2025



Property Information

01325 363858

45 Duke Street, Darlington, County Durham, DL3 7SD
sales@venturepropertiesuk.com