



## Moorfield Close

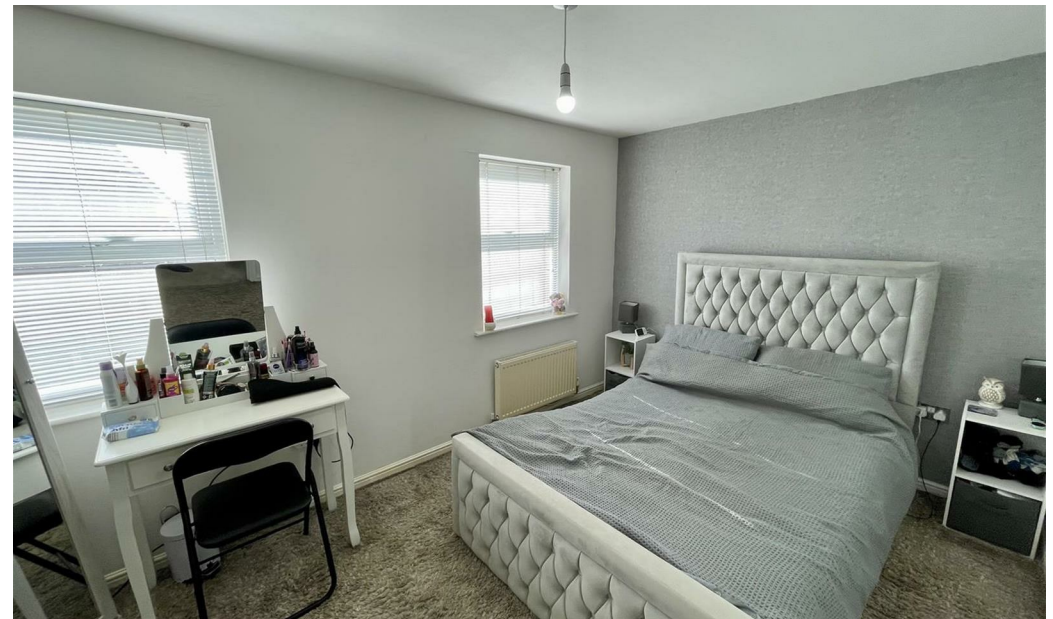
Darlington DL1 4RX

Offers Over £122,000





This footer paragraph is an example only and should not be relied upon as complying with current legislation. These particulars, whilst believed to be accurate are set out as a general outline only for guidance and do not constitute any part of an offer or contract. Intending purchasers should not rely on them as statements of representation of fact, but must satisfy themselves by inspection or otherwise as to their accuracy. No person in this firm's employment has the authority to make or give any representation or warranty in respect of the property.



This footer paragraph is an example only and should not be relied upon as complying with current legislation. These particulars, whilst believed to be accurate are set out as a general outline only for guidance and do not constitute any part of an offer or contract. Intending purchasers should not rely on them as statements of representation of fact, but must satisfy themselves by inspection or otherwise as to their accuracy. No person in this firm's employment has the authority to make or give any representation or warranty in respect of the property.



# Moorfield Close

Darlington DL1 4RX



- Two bedroom Semi-Detached Property
- Council Tax Band B

- Eastbourne Location
- EPC Rating C

- Close to Amenities

This two bedroom semi-detached property comes to the market and is located in the Moorfields Development in the Eastbourne Area of Darlington, close to amenities including retail parks, Railway Station and schools. The property comprises entrance hallway, cloakroom/w.c., kitchen, new boiler November 20247, lounge, two bedrooms and a family bathroom. Gardens to the front and rear with parking to the front and access to the garage.

Viewing is highly recommended.

## Entrance Hall

Door to front, radiator and staircase to first floor Landing.

## Lounge

14'6 x 10'3 (4.42m x 3.12m)

Upvc double glazed window to front , French doors to rear and radiator.

## Kitchen

11'7 x 7'5 (3.53m x 2.26m)

Upvc double glazed window to front, fitted with wall, base and drawer units, stainless steel sink, electric oven and hob with extractor over. There is space for a washing machine and fridge freezer and there is a wall mounted radiator.

## Downstairs Cloaks

Upvc double glazed obscure window to front, w.c, wash hand basin and radiator.

## First Floor Landing

Radiator.

## Bedroom One

14'6 x 8'8 (4.42m x 2.64m)

Two Upvc double glazed windows to rear and radiator.

## Bedroom Two

14'6 x 7'7 (4.42m x 2.31m)

Two Upvc double glazed windows to front, storage cupboard and radiator.

## Bathroom

Upvc double glazed obscure window to side, fitted bath with shower over and screen, w.c., wash hand basin and radiator.

## Externally

To the front there is off street parking and access to garage.

## Council Tax

Band B

## Tenure

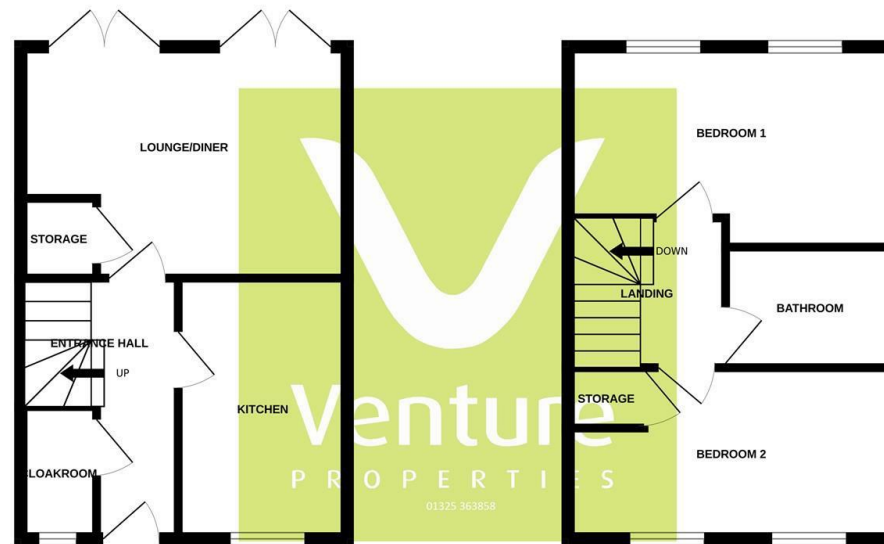
Freehold

## Note

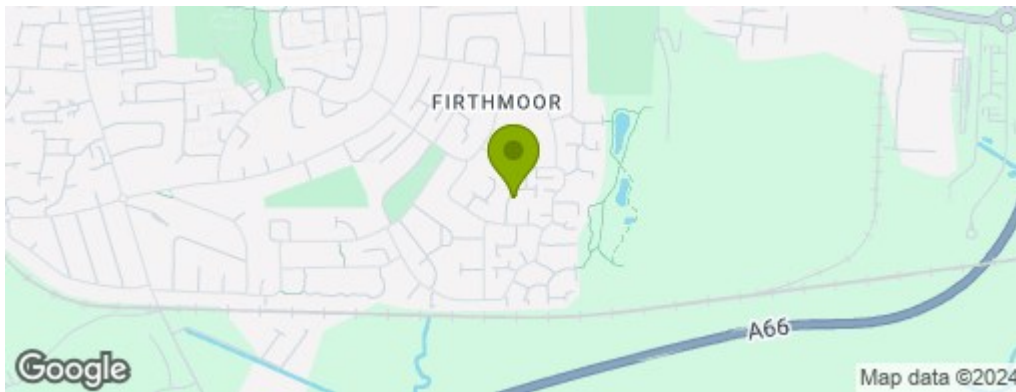
IMPORTANT NOTE TO PURCHASERS: We endeavour to make our sales particulars accurate and reliable, however, they do not constitute or form part of an offer or any contract and none is to be relied upon as statements of representation or fact. The services, systems and appliances listed in this specification have not been tested by us and no guarantee as to their operating ability or efficiency is given. All measurements have been taken as a guide to prospective buyers only, and are not precise. Floor plans where included are not to scale and accuracy is not guaranteed. If you require clarification or further information on any points, please contact us, especially if you are travelling some distance to view. Fixtures and fittings other than those mentioned are to be agreed with the seller. We cannot also confirm at this stage of marketing the tenure of this house

GROUND FLOOR

1ST FLOOR



Whilst every attempt has been made to ensure the accuracy of the floorplan contained here, measurements of doors, windows, rooms and any other items are approximate and no responsibility is taken for any error, omission or mis-statement. This plan is for illustrative purposes only and should be used as such by any prospective purchaser. The services, systems and appliances shown have not been tested and no guarantee as to their operability or efficiency can be given.  
Made with Metroplan ©2024



## Property Information

**01325 363858**

45 Duke Street, Darlington, County Durham, DL3 7SD  
sales@venturepropertiesuk.com