



Wolsingham Terrace

Darlington DL1 2JZ

Offers Over £65,000





This footer paragraph is an example only and should not be relied upon as complying with current legislation. These particulars, whilst believed to be accurate are set out as a general outline only for guidance and do not constitute any part of an offer or contract. Intending purchasers should not rely on them as statements of representation of fact, but must satisfy themselves by inspection or otherwise as to their accuracy. No person in this firm's employment has the authority to make or give any representation or warranty in respect of the property.



This footer paragraph is an example only and should not be relied upon as complying with current legislation. These particulars, whilst believed to be accurate are set out as a general outline only for guidance and do not constitute any part of an offer or contract. Intending purchasers should not rely on them as statements of representation of fact, but must satisfy themselves by inspection or otherwise as to their accuracy. No person in this firm's employment has the authority to make or give any representation or warranty in respect of the property.



Wolsingham Terrace

Darlington DL1 2JZ



- Two Bedroom Mid Terrace
- Council Tax Band A
- Two Reception Rooms

- Popular Haughton Location
- Epc Rating E
- Open View To Rear

- Gated Yard To Rear
- Ideal Investment

Ideal investment or first home this two bedroomed mid terraced property available situated in the Haughton area of Darlington close to the College, town centre and transport links. The property benefits from two reception rooms and two double bedrooms, a modern fitted kitchen, gas central heating and double glazing and is not overlooked to the rear.

Council Tax Band A

Entrance Porch

Lounge

13'2" x 12'2" (4.01 x 3.71)

Situated to the front with bay window and wall mounted gas fire.

Dining Room

12'0" x 7'3" (3.66 x 2.21)

Situated to the rear with brick fireplace and gas fire. Understairs storage and built in cupboards. Window to rear.

Kitchen

8'9" x 5'11" (2.67 x 1.80)

Brand new kitchen with a range of wall and base units with sink unit and drainer and integrated electric oven and hob. Window to side.

Bathroom

5'10" x 5'6" (1.78 x 1.68)

Situated to the rear with obscure window to side, comprising bath with electric shower over, low level w.c. and wash hand basin.

Staircase/Landing

Bedroom One

13'2" x 12'1" (4.01 x 3.68)

Situated to the front with window to front.

Bedroom Two

13'2" x 7'3" (4.01 x 2.21)

Situated to the rear with window to rear, cupboard with hanging and storage space.

Externally

To the rear of the property is an enclosed yard with gated access to open fields.

Council Tax

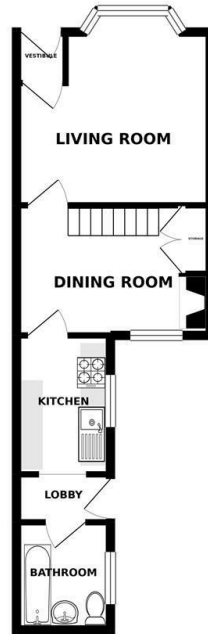
Band A

Tenure

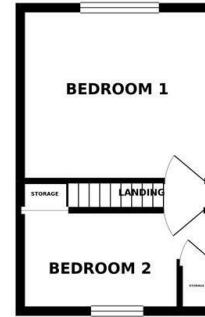
Note

IMPORTANT NOTE TO PURCHASERS: We endeavour to make our sales particulars accurate and reliable, however, they do not constitute or form part of an offer or any contract and none is to be relied upon as statements of representation or fact. The services, systems and appliances listed in this specification have not been tested by us and no guarantee as to their operating ability or efficiency is given. All measurements have been taken as a guide to prospective buyers only, and are not precise. Floor plans where included are not to scale and accuracy is not guaranteed. If you require clarification or further information on any points, please contact us, especially if you are travelling some distance to view. Fixtures and fittings other than those mentioned are to be agreed with the seller. We cannot also confirm at this stage of marketing the tenure of this house

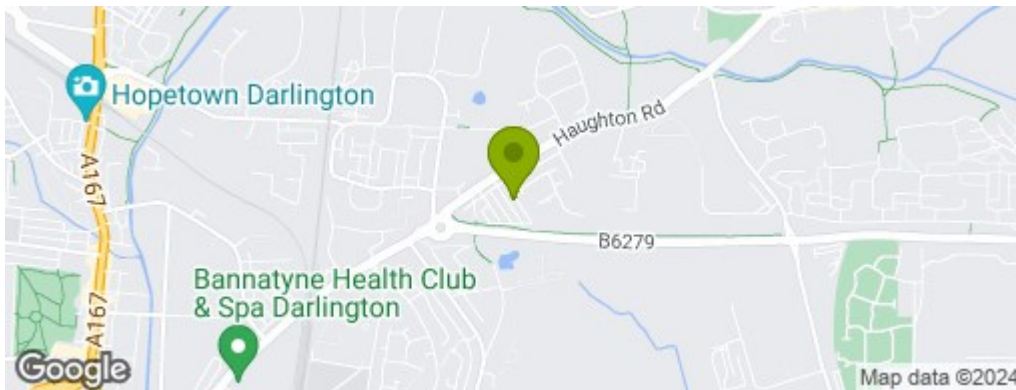
GROUND FLOOR



1ST FLOOR



Whilst every attempt has been made to ensure the accuracy of the floorplan contained here, measurements of doors, windows, rooms and any other items are approximate and no responsibility is taken for any error, omission or misstatement. This plan is for illustrative purposes only and should be used as such for any prospective purchaser. The services, systems and appliances shown here have not been tested and no guarantee as to their operability or efficiency can be given.
Made with Memento 02/2019



Property Information

01325 363858

45 Duke Street, Darlington, County Durham, DL3 7SD
sales@venturepropertiesuk.com