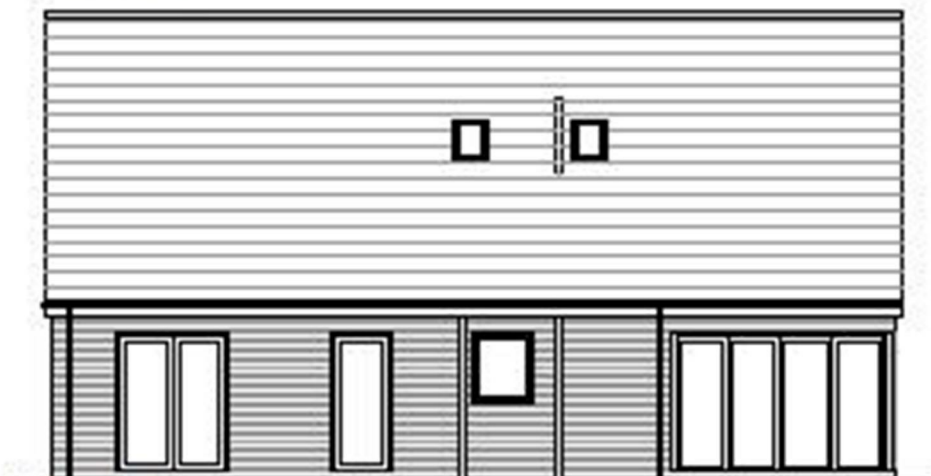




Front Elevation



Side Elevation



Rear Elevation



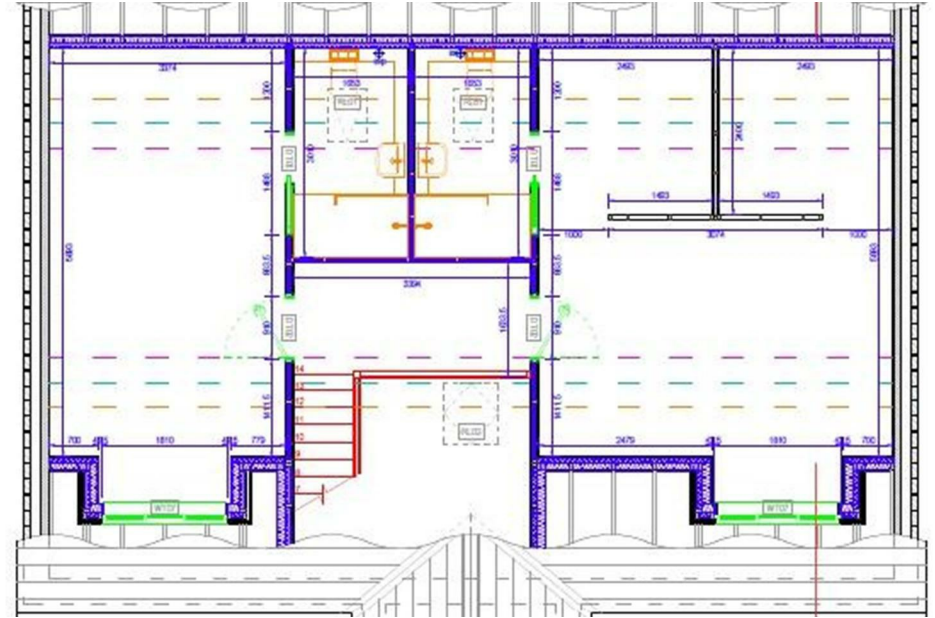
Side Elevation

Barmpton Lane

Darlington DL1 3HB

Offers In The Region Of £445,000





This footer paragraph is an example only and should not be relied upon as complying with current legislation. These particulars, whilst believed to be accurate are set out as a general outline only for guidance and do not constitute any part of an offer or contract. Intending purchasers should not rely on them as statements of representation of fact, but must satisfy themselves by inspection or otherwise as to their accuracy. No person in this firm's employment has the authority to make or give any representation or warranty in respect of the property.

Barmpton Lane

Darlington DL1 3HB

- 4 Bedroom Detached Home
- Call For Further Details
- New Build

- Private Location
- Council Tax Band TBC



- Four Bedroom Dormer Bungalows with Garages
- Close To Majore Routeways Across Town And Country

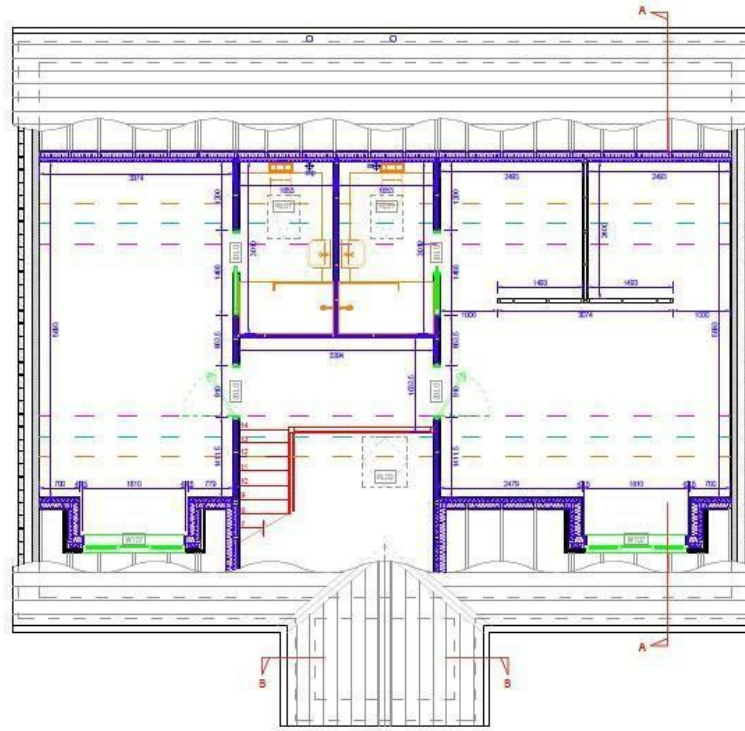
Welcome to this exclusive brand new development located off Barmpton Lane in the Haughton area of Darlington. This unique gated community consists of 4 x 4 bedroom detached dormer style bungalows with garages, large gardens and parking.

The fabulous stone built properties will have anthracite grey window frames, soffits and fascias complete with tinted glass windows. Each property will be finished to the highest of standard to include fully fitted kitchens complete with granite worksurfaces and integrated appliances perfect for whipping up delicious meals or hosting dinner parties, a utility room, two large king size bedrooms to the ground floor and a large bathroom, together with two large king size bedrooms to the first floor with Jack and Jill En-suite.

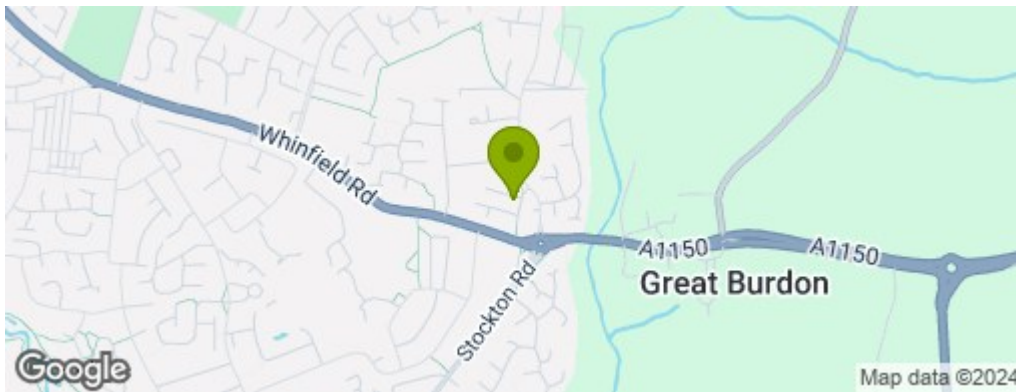
Externally, the properties will feature lovely gardens where you can relax, unwind, and enjoy the fresh air, together with garages and parking.

Don't miss out on the opportunity to make one of these wonderful properties your own - contact the Sales Team at Venture Properties for more information. 01325 363858.

www.venturepropertiesuk.com



Property Information



01325 363858

45 Duke Street, Darlington, County Durham, DL3 7SD
sales@venturepropertiesuk.com