



Whitworth Drive

Darlington DL2 1TZ

£330,000





This footer paragraph is an example only and should not be relied upon as complying with current legislation. These particulars, whilst believed to be accurate are set out as a general outline only for guidance and do not constitute any part of an offer or contract. Intending purchasers should not rely on them as statements of representation of fact, but must satisfy themselves by inspection or otherwise as to their accuracy. No person in this firm's employment has the authority to make or give any representation or warranty in respect of the property.



This footer paragraph is an example only and should not be relied upon as complying with current legislation. These particulars, whilst believed to be accurate are set out as a general outline only for guidance and do not constitute any part of an offer or contract. Intending purchasers should not rely on them as statements of representation of fact, but must satisfy themselves by inspection or otherwise as to their accuracy. No person in this firm's employment has the authority to make or give any representation or warranty in respect of the property.

Whitworth Drive

Darlington DL2 1TZ



- 4 Bedroom detached
- Must be viewed

- Middleton St George
- EPC Rating B

- Gardens front and rear
- Council Tax band E

This stylish and beautifully presented four bedroom detached property constructed by Miller Homes in 2018 to The Buchan design benefits from the remaining 10 year NHBC Guarantee and is in ready to move into condition with a modern fitted kitchen complete with appliances and modern bathroom and en-suite to the main bedroom. The property has gardens to the front and rear, off street parking and a garage to the rear.

Middleton St George is a popular growing village commutable to both Darlington and Teesside and boasts a village pub, supermarket, and a sought after school.

Ideally suiting family living we recommend early viewing.

Entrance Hall

Lounge

15'9 x 11'4 (4.80m x 3.45m)

Situated to the rear with gas central heating radiator and French doors leading to rear garden.

Study

7'7 x 6'9 (2.31m x 2.06m)

With double glazed window and gas central heating radiator.

Downstairs cloakroom

Wash hand basin and w.c. Gas central heating radiator

Kitchen /Dining room

22'10 x 9'1 (6.96m x 2.77m)

Situated to the front with a range of wall, base and drawer units, stainless steel sink unit, 4 ring gas hob, electric double oven, integrated fridge freeze and integrated dishwasher.

Utility Room

With a range of floor units, Stainless steel sink unit, space for washing machine. Door leading to rear.

First floor landing

Storage cupboard and gas central heating radiator.

Bedroom 1

12'5 x 11'6 (3.78m x 3.51m)

Situated to the front with fitted wardrobes, gas central heating radiator and double glazed window.

En-Suite

Suite comprising shower cubicle and shower, wash hand basin and w.c. Double glazed window and radiator.

Bedroom 2

12'4 x 9'2 (3.76m x 2.79m)

Situated to the rear with gas central heating radiator and double glazed window. Fitted wardrobes.

Bedroom 3

10'2 x 8'3 (3.10m x 2.51m)

With gas central heating radiator and double glazed window.,

Bedroom 4

10 x 7'11 (3.05m x 2.41m)

Gas central heating and double glazed window.

Bathroom W.C

With suite comprising Bath, shower cubicle with shower, wash hand basin, w.c. Double glazed window and radiator.

Externally

To the rear of the property the area is mainly laid to lawn with patio area. Detached single garage.

NOTE

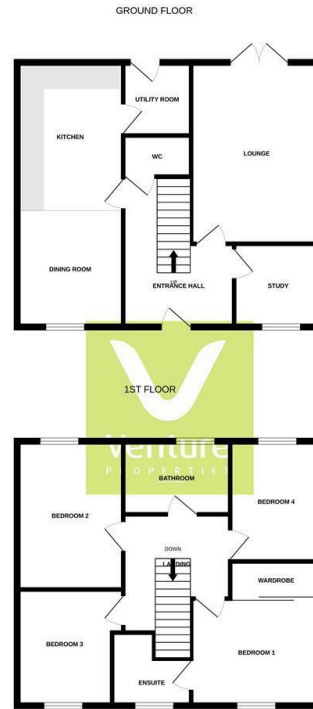
IMPORTANT NOTE TO PURCHASERS: We endeavour to make our sales particulars accurate and reliable, however, they do not constitute or form part of an offer or any contract and none is to be relied upon as statements of representation or fact. The services, systems and appliances listed in this specification have not been tested by us and no guarantee as to their operating ability or efficiency is given. All measurements have been taken as a guide to prospective buyers only, and are not precise. Floor plans where included are not to scale and accuracy is not guaranteed. If you require clarification or further information on any points, please contact us, especially if you are travelling some distance to view. Fixtures and fittings other than those mentioned are to be agreed with the seller. We cannot also confirm at this stage of marketing the tenure of this house

TENURE

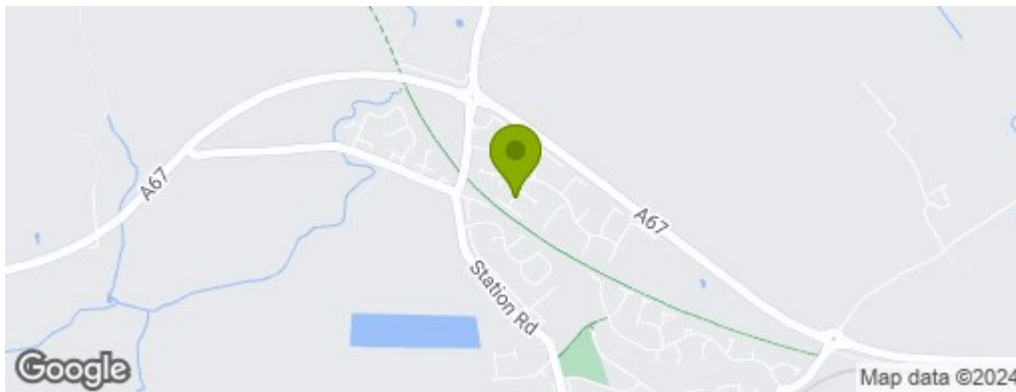
The Property is Freehold

Council Tax band

Council Tax band E



Whilst every attempt has been made to ensure the accuracy of the floorplan contained here, measurements of doors, windows, stairs and any other items are approximate and no responsibility is taken for any error, omission or mis-statement. This plan is for illustrative purposes only and should be used as such by any prospective purchaser. The services, systems and appliances shown here have not been tested and no guarantee as to their operability or efficiency can be given.
Made with letroplan ©2024



Property Information

01325 363858

45 Duke Street, Darlington, County Durham, DL3 7SD
sales@venturepropertiesuk.com