



LONG READINGS SLOUGH, SL2 1PZ

Nestled in the charming area of Britwell, this mid-terrace family home on Long Readings Lane presents an excellent opportunity for those looking to create their ideal living space. The property boasts three well-proportioned bedrooms, including two spacious double rooms and a third bedroom that has been thoughtfully converted into a study, perfect for those who work from home or require additional space.

£400,000

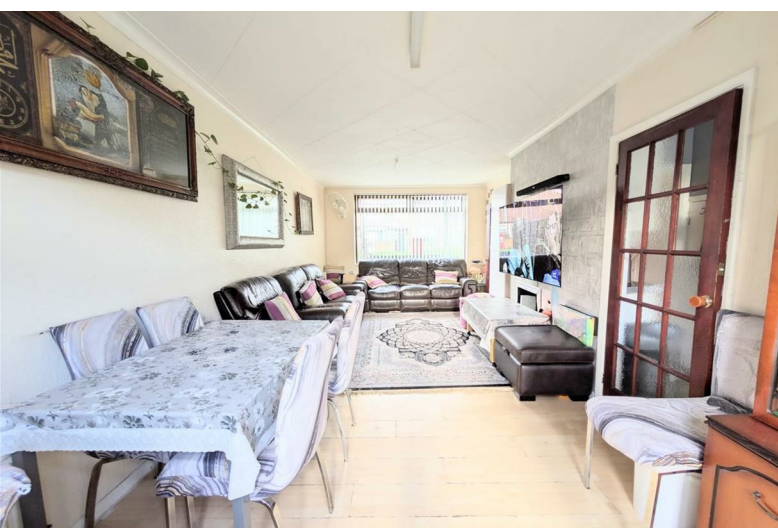


Upon entering, you will find a generous through lounge and dining area, providing a welcoming atmosphere for family gatherings and entertaining guests. The separate kitchen offers practicality and potential for modernisation, allowing you to design it to your taste. The family bathroom is conveniently located on the first floor, serving the bedrooms with ease.

Outside, the property features a private rear garden, an ideal spot for relaxation or outdoor activities. Additionally, there is on-road residents parking available for up to two vehicles, ensuring convenience for you and your guests.

The location is particularly advantageous, with excellent bus links to the town centre, making commuting and access to local amenities straightforward. While the home is in need of some modernisation, it offers a fantastic canvas for those looking to add their personal touch and create a comfortable family haven. This property is a wonderful opportunity for first-time buyers or families seeking a home in a friendly community.

- Three bedroom mid terrace house
- Through lounge and diner
- Separate Kitchen
- Private Rear Garden with a Garage
- On street residents parking
- Great for investment
- Third bedroom can be converted to a study room
- Close to excellent bus links to Town Centre



411 Bath Road, Slough, SL1 5QL
t: 01628 667442
e: sales@cameronking.co.uk

