



## MAPLIN PARK SLOUGH, SL3 8YD

Situated in the modern development of Maplin Park, Cameron King are delighted to bring to the market this spacious first floor split level maisonette. With an extended lease, residents car parking and well maintained

# £260,000



1



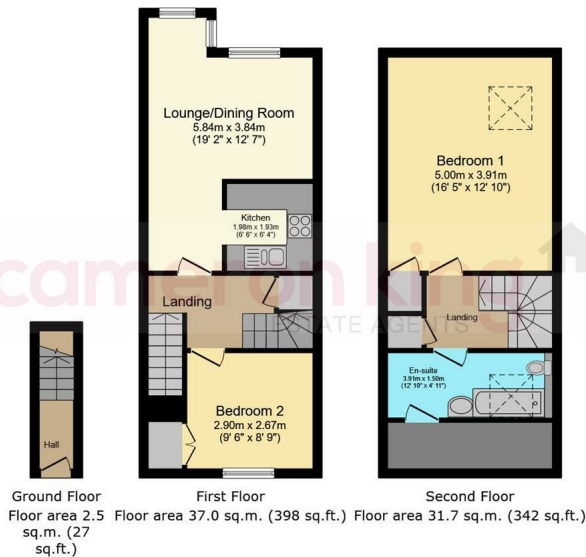
1



2

EPC C





communal gardens an internal viewing is highly recommended.

This two double bedroom maisonette benefits with a semi open plan living, diner and kitchen, property is conveniently located and suitable for first stime buyers or property investors.

Maplin Park is a popular residential development to the north-east of Langley, and ideally located just 0.7 miles to Langley railway and Elizabeth Line station. Langley High Street can also be found the same distance away, providing lots of local shops, amenities and services. There are many primary, secondary and grammar schools less than 1 mile away providing easy access via foot or car. Easy access to M4, M25 and M40.

- Sold with no onward chain
- Access to residents parking
- Easy access to M4 & M25 Motorways
- Secure entry phone system
- Easy access to Heathrow Airport
- Within walking distance of local schools



411 Bath Road, Slough, SL1 5QL  
t: 01628 667442  
e: sales@cameronking.co.uk

