



ALVISTA AVENUE MAIDENHEAD, SL6 0PG

Nestled on Alvista Avenue in the charming area of Taplow, Maidenhead, this delightful property offers a perfect blend of comfort and convenience, making it an ideal choice for families or professionals seeking a rental home. With four spacious bedrooms, there is ample room for relaxation and personal space. The two well-appointed

£2,500 PCM



2



2

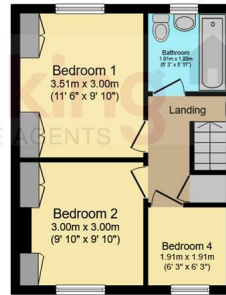


4

EPC C



Ground Floor
Floor area 79.0 sq.m. (851 sq.ft.)



First Floor
Floor area 33.0 sq.m. (355 sq.ft.)

Total floor area: 112.1 sq.m. (1,206 sq.ft.)

This floor plan is for illustrative purposes only. It is not drawn to scale. Any measurements, floor areas (including any total floor area), openings and orientations are approximate. No details are guaranteed, they cannot be relied upon for any purpose and do not form any part of any agreement. No liability is taken for any error, omission or misstatement. A party must rely upon its own inspection(s). Powered by www.Propertybox.io

reception rooms provide versatile areas for entertaining guests or enjoying quiet evenings at home.

The property boasts two modern bathrooms, ensuring that morning routines run smoothly for all occupants. A large rear garden presents an excellent opportunity for outdoor activities, gardening, or simply unwinding in a tranquil setting. Additionally, the inclusion of a utilities room and a dedicated office space caters to the needs of those who work from home or require extra storage.

Parking is a breeze with space available for two vehicles, adding to the convenience of this lovely residence. The property is available for a six-month tenancy, making it a flexible option for those looking to settle in this desirable location.

With its appealing features and prime location, this property on Alvista Avenue is ready to welcome its new tenants. Don't miss the chance to make this charming house your home.

- Available Now
- 1.1 Miles from Burnham Train Station (Main Paddington Line and Crossrail Station - 20 minutes to Central London)
- 6 Month Rental Only
- Large Rear Garden
- Close to Local Amenities
- Offered Unfurnished
- Easy Access To M4 Motorway (Junction 7)



**cameron
king**
ESTATE AGENTS

411 Bath Road, Slough, SL1 5QL
t: 01628 667442
e: sales@cameronking.co.uk



rightmove

Zoopla

PrimeLocation.com