

TWO MILE DRIVE. CIPPENHAM, SL1 5UH

Welcome to this charming top floor apartment located on Two Mile Drive in the delightful area of Cippenham. This modern purpose-built flat boasts one reception room, one bedroom, and one bathroom, making it a cosy and convenient living space for those seeking comfort and style.

£1,000 PCM



1



1



1

EPC C

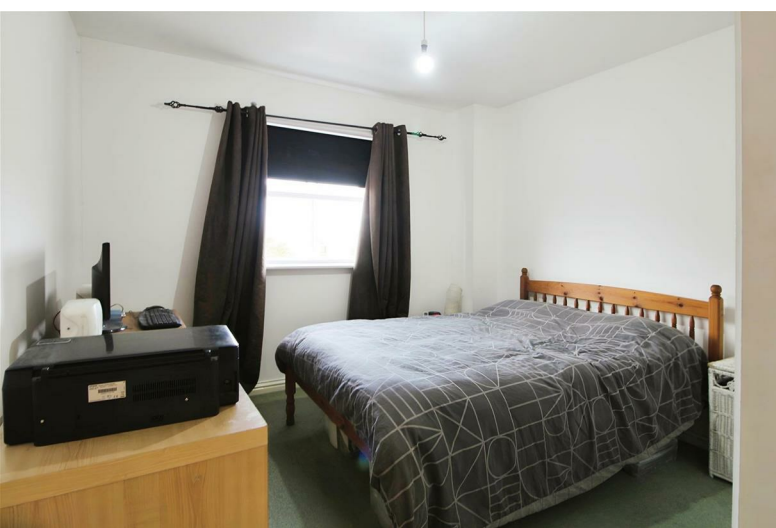
One of the highlights of this property is the parking provision for two vehicles, ensuring that you and your guests will always have a convenient place to park.

Imagine waking up in the morning and enjoying the view from the top floor, feeling like you're on top of the world. The abundance of natural light that floods the rooms creates a warm and inviting atmosphere, perfect for relaxing after a long day.

Conveniently located, this property offers easy access to local amenities and transport links, making it ideal for those who value both convenience and comfort in their daily lives.

If you're looking for a modern, well-appointed flat with parking space for two vehicles, then this top floor apartment on Two Mile Drive is the perfect place to call home. Don't miss out on the opportunity to make this lovely property yours - it will be available from the end of May.

- 1.8 miles from Burnham Train Station (Main Paddington Line and Crossrail Station - 20 minutes to Central London)
- 2 Parking Spaces
- Quiet cul-de-sac Location
- Offered Unfurnished
- Easy access to M4 (Junction 7)
- Gas Central Heating
- Close to local schools and shops
- Available from 24th May 2025



411 Bath Road, Slough, SL1 5QL
t: 01628 667442
e: sales@cameronking.co.uk

