

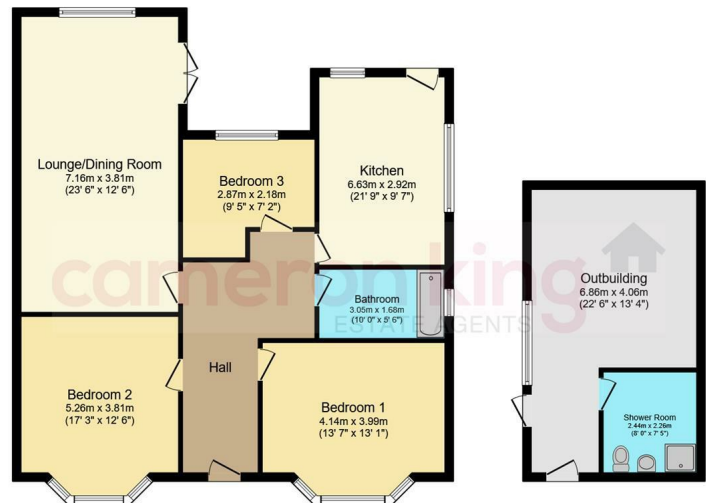


## ST ANDREWS DEDWORTH, SL4 4EN

Nestled in the tranquil St Andrews Crescent, Dedworth, this charming detached bungalow offers a perfect blend of comfort and convenience. With four spacious bedrooms, this property is ideal for families or those seeking extra space. The large bedrooms provide ample room for relaxation and personalisation, ensuring that everyone can enjoy their

# £2,600 PCM





**Floor Plan**  
Floor area 101.1 sq.m. (1,088 sq.ft.)

**Outbuilding**  
Floor area 27.4 sq.m. (295 sq.ft.)

Total floor area: 128.5 sq.m. (1,383 sq.ft.)

This floor plan is for illustrative purposes only. It is not drawn to scale. Any measurements, floor areas (including any total floor area), openings and orientations are approximate. No details are guaranteed, they cannot be relied upon for any purpose and do not form any part of any agreement. No liability is taken for any error, omission or misstatement. A party must rely upon its own inspection(s). Powered by www.Propertybox.io

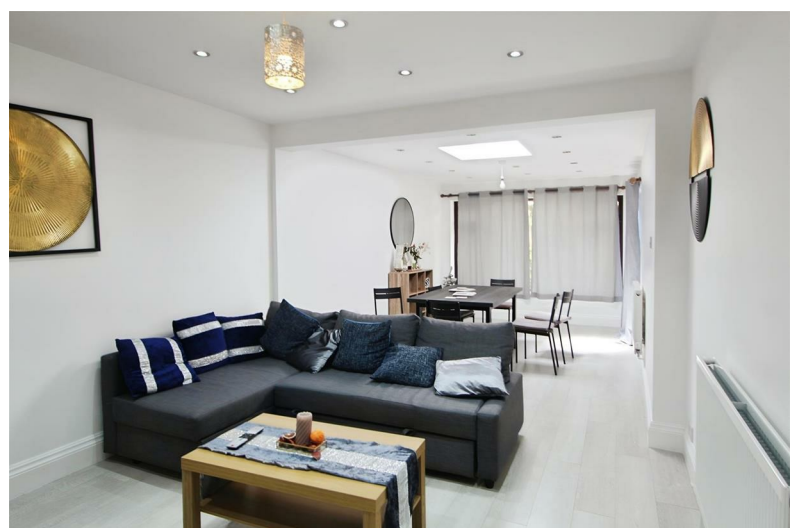
own sanctuary.

The bungalow features a welcoming reception room, perfect for entertaining guests or enjoying quiet evenings at home. With two well-appointed bathrooms, morning routines will be a breeze, accommodating the needs of a busy household.

Situated in a peaceful cul de sac, this property benefits from a serene environment, making it an excellent choice for those who appreciate a quiet lifestyle. The location is not only tranquil but also conveniently close to local amenities, ensuring that everything you need is within easy reach.

For those with a vehicle, the property includes parking for one car, adding to the convenience of this delightful home. Whether you are looking to rent a family home or simply seeking a comfortable space to unwind, this bungalow in Dedworth is a wonderful opportunity not to be missed.

- Available 9th June 2025
- Easy Access to M4 (Junction 5)
- Offered Unfurnished
- Close to Windsor Town Centre
- Outbuilding with Bathroom
- Close to Local Amenities
- Large Private Rear Garden
- Gas Central Heating



**cameron**  
**king**  
ESTATE AGENTS

411 Bath Road, Slough, SL1 5QL  
t: 01628 667442  
e: sales@cameronking.co.uk



**rightmove**

**Zoopla**

**PrimeLocation.com**