



BOWER WAY SLOUGH, SL1 5HQ

Located in the charming area of Cippenham, Slough, this lovely one-bedroom property is now ready for rent. Ideal for individuals or couples, this residence provides a cozy living space with a well-appointed reception room perfect

£1,150 PCM



1



1



1

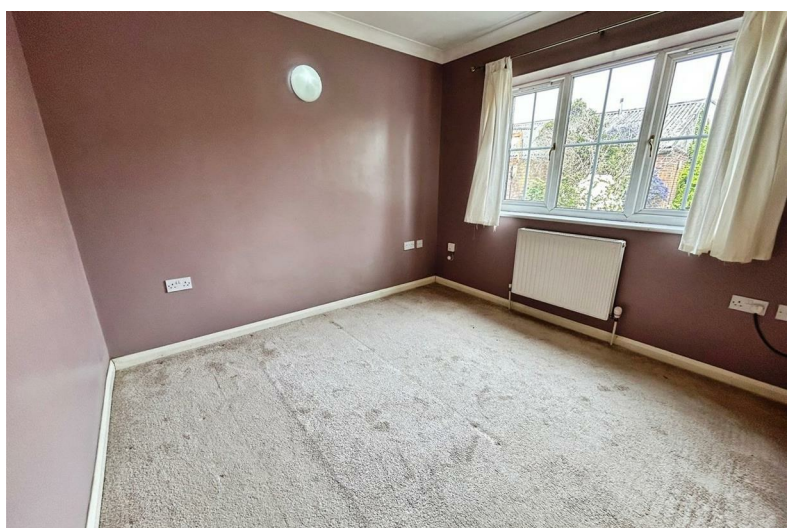
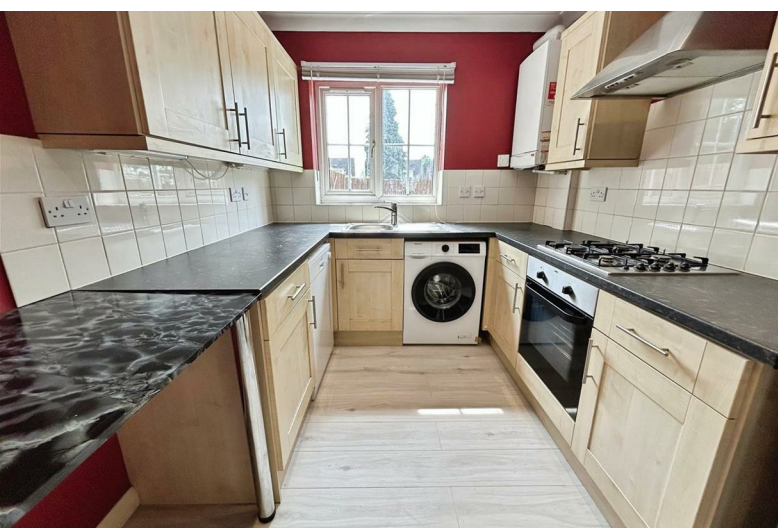
EPC C

for relaxation and social gatherings.

The property includes a spacious bedroom, offering a tranquil retreat at the end of the day. The bathroom is conveniently situated for easy access by residents and guests and includes a panel enclosed bath, wc, wash hand basin and separate shower cubicle. Noteworthy features of this property include a private rear garden, one allocated parking space, and visitor parking, catering to those with vehicles.

The prime location in Cippenham provides a pleasant atmosphere and convenient access to local amenities, parks, and transportation options. This property is available for immediate occupancy, making it an excellent choice for those seeking a comfortable and well-situated home in Cippenham.

- Available Now
- Easy access to M4 Motorway (Junction 7)
- Offered Unfurnished
- 0.5 miles from Burnham Rail Station (Main Paddington Line and Crossrail Station - 20 minutes to Central London)
- Private rear garden
- Gas central heating
- One allocated parking space - Access to visitor parking
- Ground floor



411 Bath Road, Slough, SL1 5QL
t: 01628 667442
e: sales@cameronking.co.uk

