



REEDHAM ROAD SLOUGH, SL1 8AG

£416,950

A brand new two-bedroom apartment situated in Burnham, featuring a modern kitchen, spacious living and dining area, en-suite shower room, and contemporary bathroom. Beeches Lodge consists of 46 one and two-bedroom apartments in Burnham, conveniently located near local amenities.



2



1



2

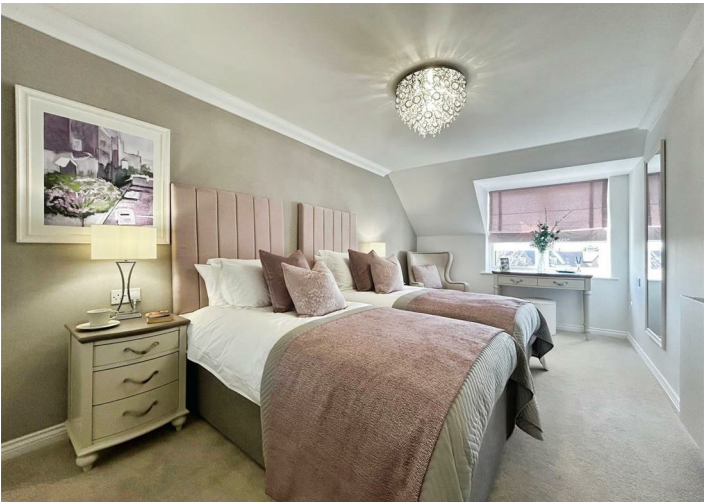
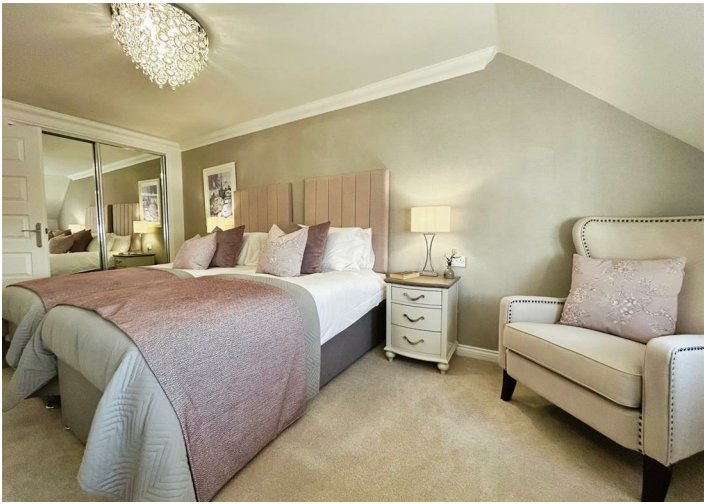
EPC

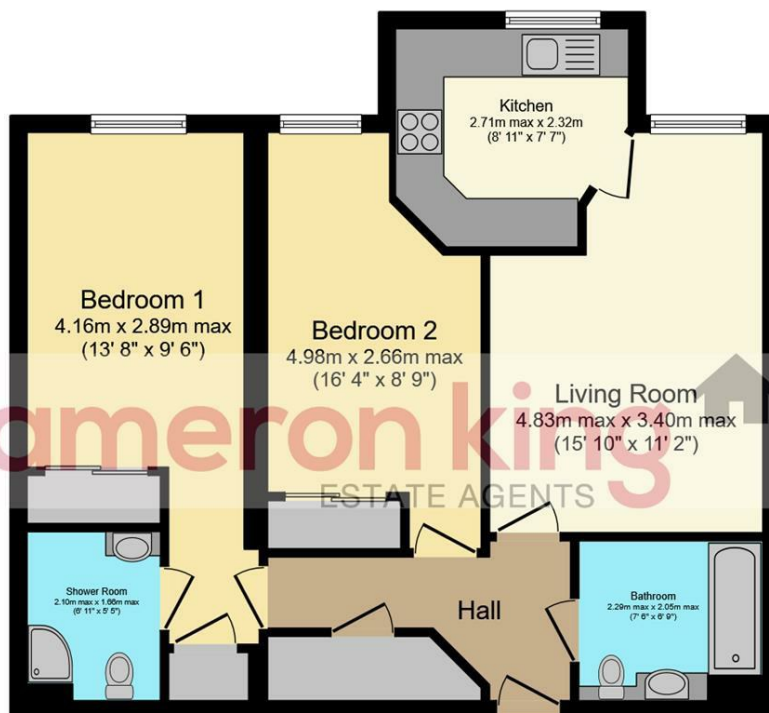
The development is thoughtfully designed to simplify your life, allowing you to enjoy your retirement to the fullest. Each apartment is self-contained with its own entrance, ensuring privacy and tranquility. There is a selection of one and two-bedroom apartments, each with slight variations in dimensions and room layout.

The communal Owner's Lounge, equipped with Wi-Fi and a coffee bar, is a popular amenity in all our lodges. The kitchens are tiled with coordinated worktops and include appliances such as waist-height oven, hob, hood, fridge/freezer, and washer/dryer. Tiled shower rooms are standard, with some apartments featuring separate en-suites and cloakrooms.

- Two bedroom retirement apartment
- Over 60's only
- Contemporary kitchen and bathroom
- Owners' lounge with coffee bar for socialising and events
- 3 Year Warranty
- Central village location
- HBF 5 Star Home Builder award
- WhatHouse' Best Retirement Home Developer 2023 award

Directions





Floor Plan

Floor area 68.3 m² (735 sq.ft.)

TOTAL: 68.3 m² (735 sq.ft.)

This floor plan is for illustrative purposes only. It is not drawn to scale. Any measurements, floor areas (including any total floor area), openings and orientations are approximate. No details are guaranteed, they cannot be relied upon for any purpose and do not form any part of any agreement. No liability is taken for any error, omission or misstatement. A party must rely upon its own inspection(s). Powered by www.Propertybox.io

cameron king
ESTATE AGENTS

411 Bath Road, Slough, SL1 5QL
t: 01628 667442
e: sales@cameronking.co.uk



rightmove

Zoopla

PrimeLocation.com