

## REEDHAM ROAD SLOUGH, SL1 8AG

A brand new one-bedroom second floor apartment situated in Burnham, featuring a modern kitchen, spacious living and dining area, en-suite shower room, and contemporary bathroom. Beeches Lodge consists of 46 one

# £336,950



1



1



1

EPC

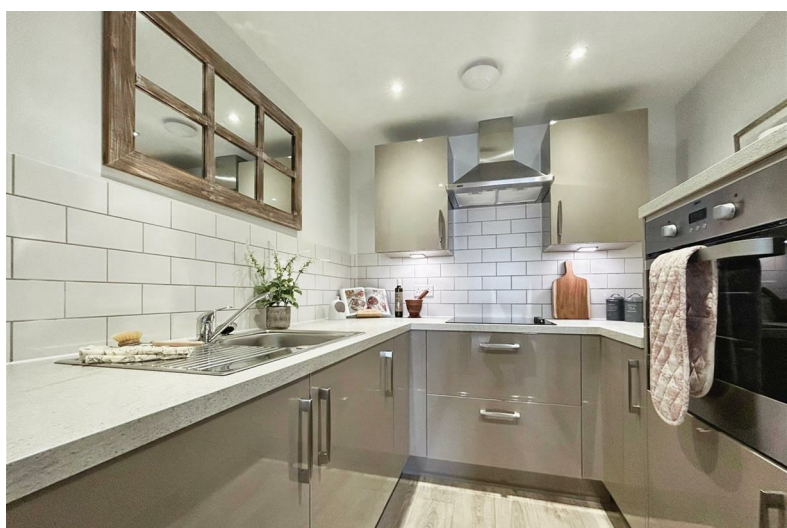
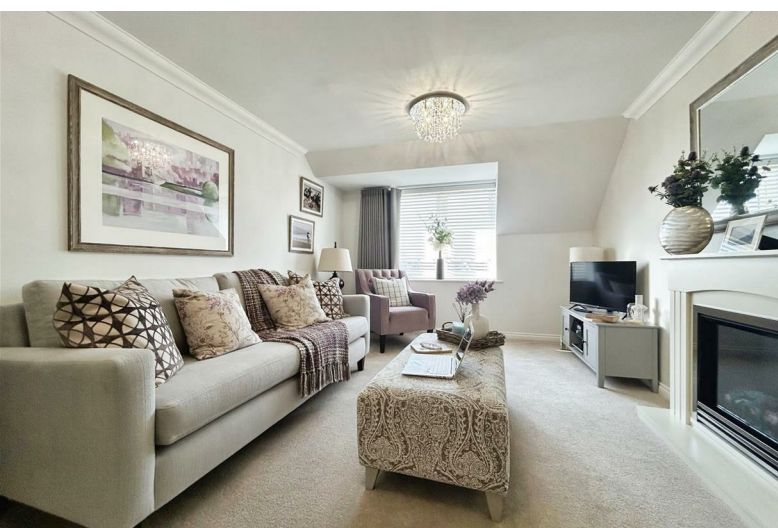


and two-bedroom apartments in Burnham, conveniently located near local amenities.

The development is thoughtfully designed to simplify your life, allowing you to enjoy your retirement to the fullest. Each apartment is self-contained with its own entrance, ensuring privacy and tranquility. There is a selection of one and two-bedroom apartments, each with slight variations in dimensions and room layout.

The communal Owner's Lounge, equipped with Wi-Fi and a coffee bar, is a popular amenity in all our lodges. The kitchens are tiled with coordinated worktops and include appliances such as waist-height oven, hob, hood, fridge/freezer, and washer/dryer. Tiled shower rooms are standard, with some apartments featuring separate en-suites and cloakrooms.

- One bedroom retirement apartment
- Over 60's only
- Contemporary kitchen and bathroom
- Owners' lounge with coffee bar for socialising and events
- 3 Year Warranty
- Central village location
- HBF 5 Star Home Builder award
- WhatHouse' Best Retirement Home Developer 2023 award



**cameron**  
  
**king**  
ESTATE AGENTS

411 Bath Road, Slough, SL1 5QL  
t: 01628 667442  
e: [sales@cameronking.co.uk](mailto:sales@cameronking.co.uk)



**rightmove** 

**Zoopla**

 **PrimeLocation.com**